

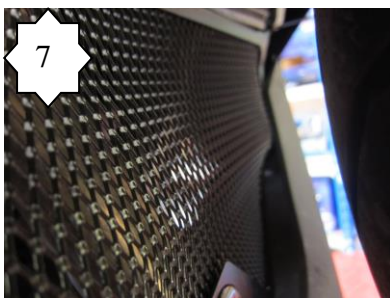
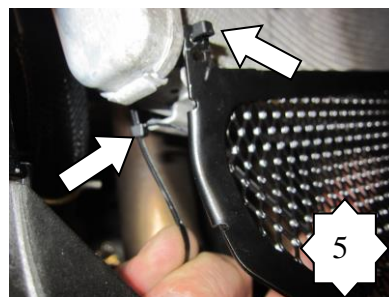
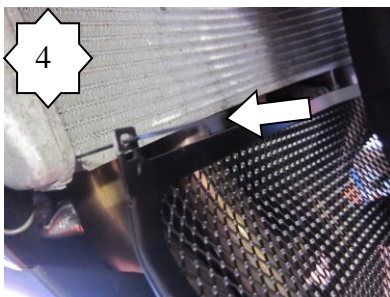
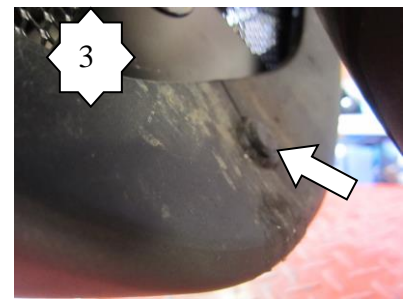
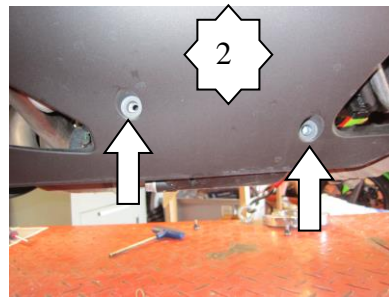
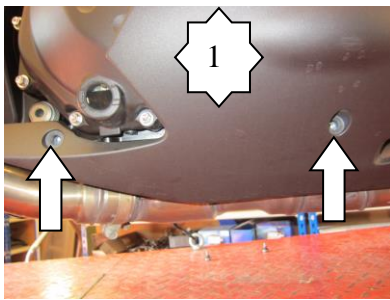


**Fitting Instructions for DG0007 BK Downpipe Grille**  
**KAWASAKI ZZR 1400 2006-2015**



**In This Kit There Should Be**

- 1 x Downpipe Grille (DG0007).
- 4 x small cable-ties.





- Remove the four lower fairing bolts arrowed in pictures 1 and 2.
- Remove the plastic push rivet arrowed in picture 3.
- Offer the downpipe grille into position and feed one of the small cable-ties through the upper slot and through the radiator matrix as shown in picture 4.
- Connect one of the other cable-ties to the already positioned cable-tie (behind the radiator) as shown in picture 5.
- Repeat the above for the other mounting slots in the downpipe grille as shown in picture 6.
- Gently ease the downpipe grille behind the lower fairings as shown in picture 7.
- Refit the plastic push rivet as shown in pictures 8 and 9 ensuring it fits through the lower mount in the downpipe grille as shown in picture 9.
- Tighten and trim the cable ties.

ISSUE 2 09/07/2013 (NSY)

#### **CONSUMER NOTICE**

The catalogue description and any exhibition of samples are only broad indications of the Products and R&G may make design changes which do not diminish their performance or visual appeal and supplying them in such state shall conform to the order. The Buyer acknowledges no representation or warranty (other than as to title) has been given or will apply to the Products other than those in R&G's order or confirmation and the Buyer confirms it has chosen the Products as being of merchantable quality and suitable for its particular purposes. Where R&G fits the Products or undertakes other services it shall exercise reasonable skill and care and rectify any fault free of charge unless the workmanship has been disturbed. The Buyer is responsible for ensuring that the warranty on the motorcycle is not affected by the fitting of the Products. On return of any defective Products R&G shall at its option either supply a replacement or refund the purchase money but shall not be liable if the Products have been modified or used or maintained otherwise than in accordance with R&G's or manufacturer's instructions and good engineering practice or if the defect arises from accident or neglect.

Other than identified above and subject to R&G not limiting its liability for causing death and personal injury, it shall not be liable for indirect or consequential loss and otherwise its liability shall be limited to the amounts paid by the Buyer for the Products or the fitting or service concerned. These terms do not affect the Buyer's statutory rights.

#### **R&G RACING RETURNS POLICY (NON-FAULTY GOODS)**

Returns must be pre-authorized (if not pre-authorized the return will be rejected). Goods may only be returned direct to us if they were purchased direct from us (customer must prove if necessary). Otherwise to be returned to original vendor. Goods must be in re-sellable condition, in the opinion of R&G Racing. All returns are subject to a 25% restocking and handling fee (25% of the gross value exc. P&P – at the prevailing price at time of purchase). The customer must pay any and all carriage charges. No returns of discontinued products, unless within 14 days of purchase. This policy does not affect your statutory rights and does not refer to faulty goods.

R&G Racing

Unit 1, Shelley's Lane, East Worldham, Alton, Hampshire, GU34 3AQ

Tel: +44 (0)1420 89007 Fax: +44 (0)1420 87301 [www.rg-racing.com](http://www.rg-racing.com) Email: [info@rg-racing.com](mailto:info@rg-racing.com)



## **Instructions de montage DG0007 BK Grille protection tuyaux** **KAWASAKI ZZR 1400 2006-2015**



### **Le kit doit contenir :**

- **1x Grille de protection (DG0007)**
  - 4 x petits colliers
  
- Enlever les 4 boulons de carénage (photos 1 et 2).
- Enlever les rivets poussoirs en plastic (photo 3).
- Mettre la grille en position et poser un des petits colliers sur la fente supérieure et à travers la matrice de radiateur (photo 4).
- Connecter un des autres colliers au collier déjà installé (derrière le radiateur) (photo 5).
- Répéter la procédure ci dessus pour les autres points de fixation dans la grille de protection (photo 6).
- Faciliter le positionnement de la grille derrière les carénages inférieurs (photo 7).
- Remettre le rivet poussoir en plastic (photos 8 et 9) en vous assurant qu'il se place à travers le support inférieur dans la grille de protection (photo 9).
- Serrer puis couper les colliers.

ISSUE 2 09/07/2013 (NSY)



**Montageanleitung für das Krümmerschutzgitter DG0007 BK**  
**KAWASAKI ZZR 1400 2006-2015**



**Dieser Kit enthält:**

- **1 x Krümmerschutzgitter (DG0007)**
  - **2 x kleine Kabelbinder**
  
- Lösen oder entfernen Sie die linke Seitenverkleidung, um Zugang zu der unteren Montageschraube am Kühler zu ermöglichen.
- Lösen und entfernen Sie die untere Montageschraube am Kühler (siehe obere Pfeile im Bild).
- Das Krümmerschutzgitter wie oben abgebildet in Position ansetzen und an der unteren Kühlerhalterung mittels der Originalschraube befestigen (bitte darauf achten, dass die untere Öffnung im Krümmerschutz-Gitter und die Öffnung für die Linsenkopfschraube aneinandergereiht sind – siehe Bild oben).
- Verwenden Sie die zwei Kabelbinder, um das Krümmerschutzgitter in Position zu befestigen (durch die Öffnungen im Krümmerschutzgitter).
- Montieren Sie die Seitenverkleidung wieder.
- Montieren Sie die Linsenkopfschrauben und überprüfen Sie, dass die untere Öffnung im Kühlerschutzgitter eingerastet ist.