

## **811280** Honda CB750 Hornet Shock Shield 2023> Fitting Instructions

### Kit Includes:

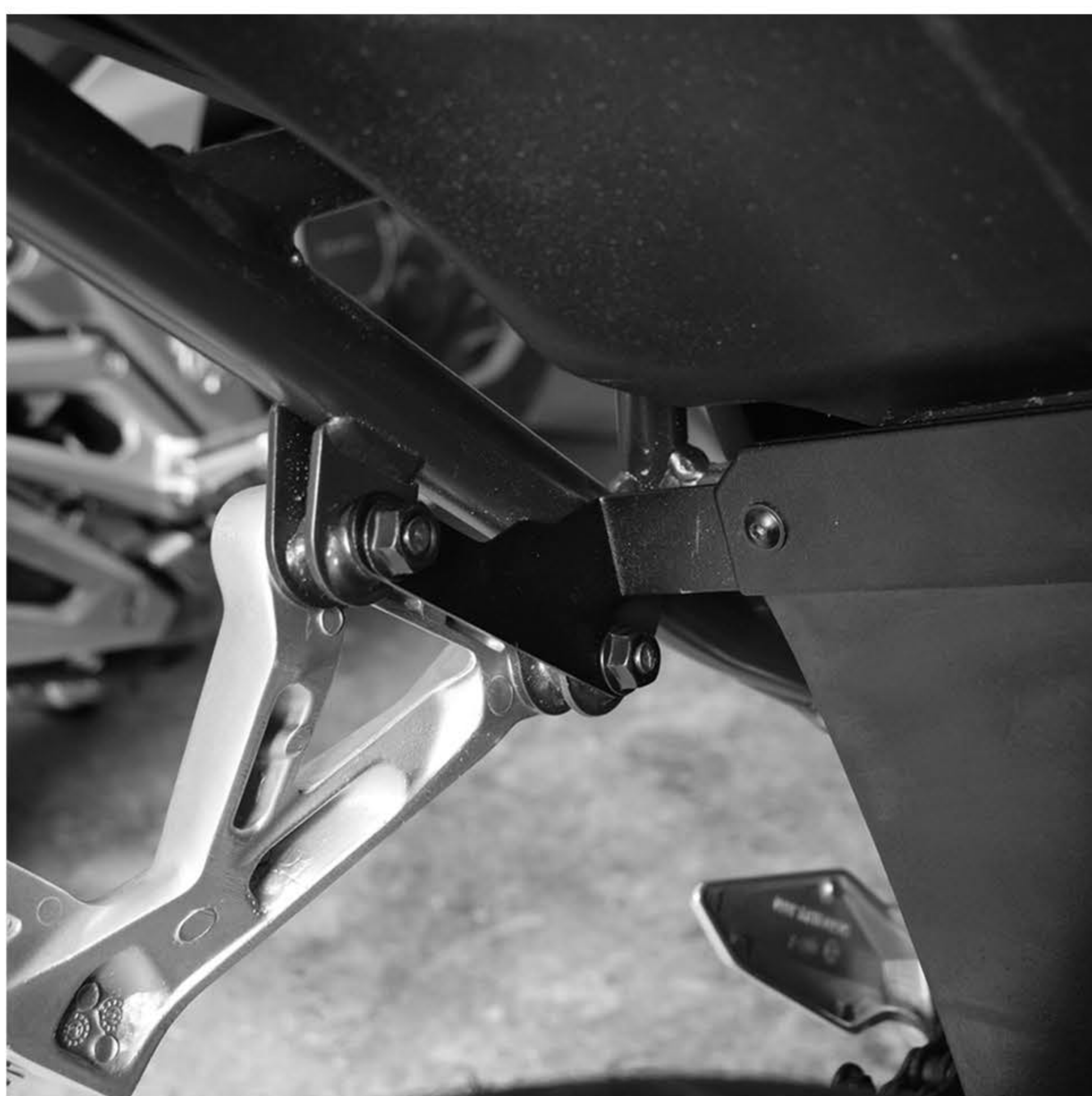
1.	X1	CFK811280	CB750 Shock Shield Brackets 'A & B'
2.	X1	C24444	Rubber Flap
3.	X2	CBOLM50018	M5 x 14mm Flanged-Button Bolt
4.	X4	CBOLM80012	M8 x 40mm Button-Head Bolt
5.	X2	CWASM50002	M5 Flat Steel Washer
6.	X4	CWASM80002	M8 Flat Steel Washer
7.	X2	CNUTM50002	M5 Nyloc Nut
8.	X4	CNUTM80001	M8 Serrated-Flange Hex Nut

### Assembly Instructions

The Pyramid Shock Shield utilises the foot peg mounting locations as shown in 'FIG. 1'. Please note: The bolts around the exhaust may need loosening to help relieve tension when unscrewing the bolts on the right-hand side.

- Start by fixing the rubber flap (Item 2) between bracket 'A' and bracket 'B' (Item 1), which are detailed in 'Fig. 3'. Use the M5 bolts provided (Item 3), along with the M5 nyloc nut (Item 7) and M5 washer (Item 5). Tighten until the rubber flap is securely clamped between the brackets. Ensure this is done in the orientation as detailed in 'FIG. 3'.
- Remove the existing bolts from the motorcycle (x 4) and position the assembled shock shield between the mounting points. Insert the M8 bolt (Item 4) and M8 washer (Item 6) into the 4 mounting locations. Only tighten the M8 bolts once all 4 have been threaded. If you have loosened the bolts around the exhaust, then re-tighten these before continuing. Please stop tightening once there is resistance.
- Thread the M8 nuts (Item 8) and tighten sufficiently, together with the M8 bolt. Please take care not to overtighten the nuts.
- The screen has now been fully fitted, as shown in 'FIG. 2'.

**Please Note: We advise that all fixings are checked periodically.**



**FIG. 1**

Any questions?  
sales@pyramidmoto.co.uk  
+44 (0)1427 677990  
www.pyramidmoto.co.uk



Follow us on social media and  
feel free to leave us a review!



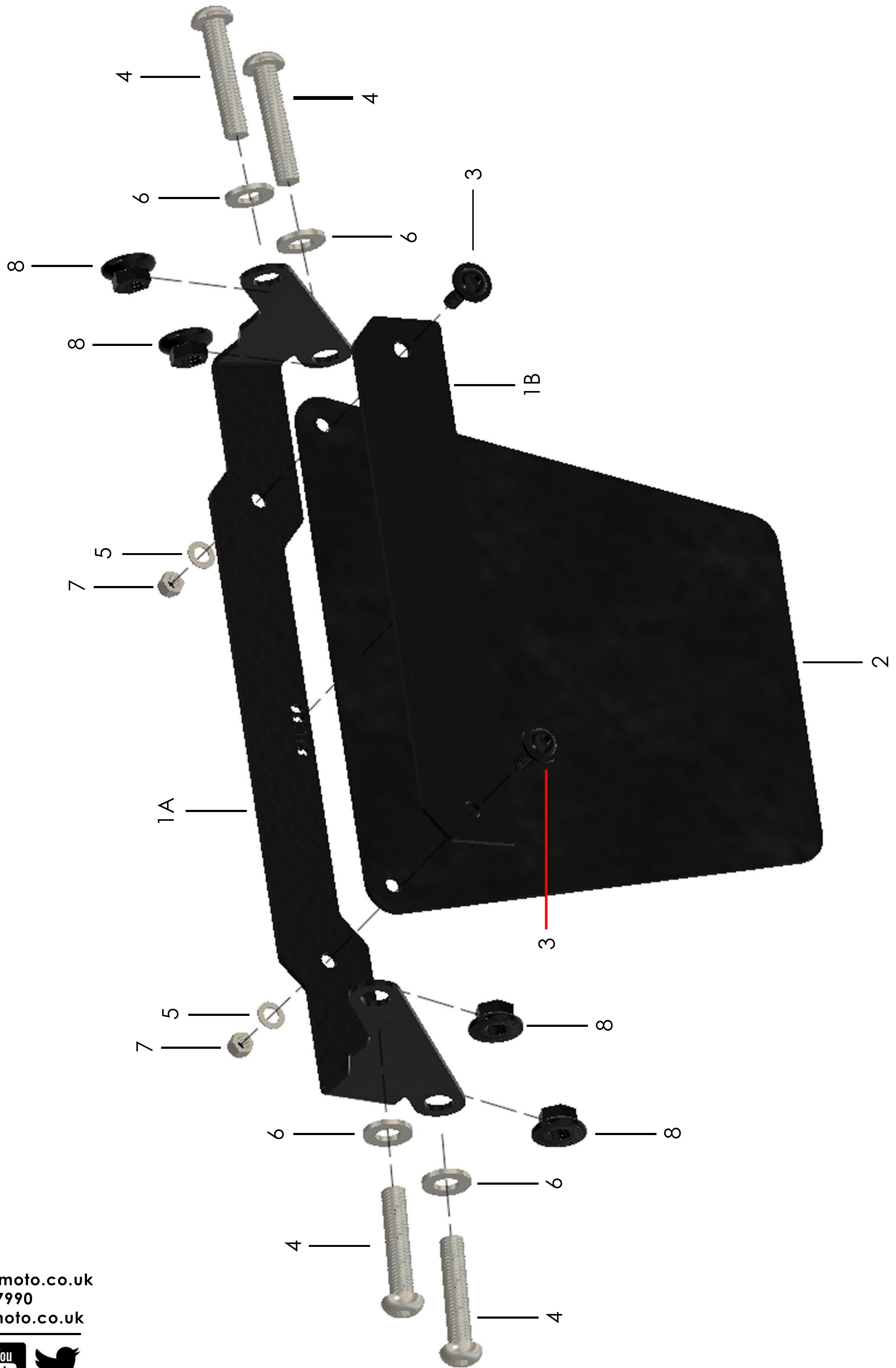
**FIG. 2**

## **811280** Honda CB750 Hornet Shock Shield 2023> Fitting Instructions

The image below will assist with identification and application of the components provided in the fitting kit.

Please rotate the page for better clarity of 'FIG. 3'.

**FIG. 3**



Any questions?  
sales@pyramidmoto.co.uk  
+44 (0)1427 677990  
www.pyramidmoto.co.uk



Follow us on social media and feel free to leave us a review!