



FITTING INSTRUCTIONS FOR LP0363BK LICENCE PLATE BRACKET



**This kit contains the items pictured and labelled over page.
Some parts may be shown for clarity of instructions only.
Do not proceed until you are sure all parts are present.
Please read all instructions before proceeding.**

**IF IN ANY DOUBT WHEN FITTING OUR PRODUCTS, CONSULT ONE OF OUR DEALERS
OR HAVE FITTED BY A QUALIFIED TECHNICIAN.**

Please note that the way the kit is packed does not necessarily represent the way of mounting to the bike.

In the event of rubber washers being used to hold components onto bolts, these rubber washers can be thrown away.

DIGITAL COPIES OF THESE INSTRUCTIONS ARE AVAILABLE FROM

WWW.RG-RACING.COM



<u>TOOLS REQUIRED</u>	<u>GENERAL TORQUE SETTINGS</u>
<ul style="list-style-type: none"> • Set of metric Hex keys to include 3mm, 4mm and 5mm. • Set of metric sockets and wrench. To include 6, 8 & 10mm. <ul style="list-style-type: none"> • 8mm & 10mm spanners. • Phillips screwdriver. 	M4 BOLT = 8Nm M5 BOLT = 12Nm M6 BOLT = 15Nm M8 BOLT = 20Nm M10 BOLT = 40Nm M12 BOLT = 40Nm

LEGEND

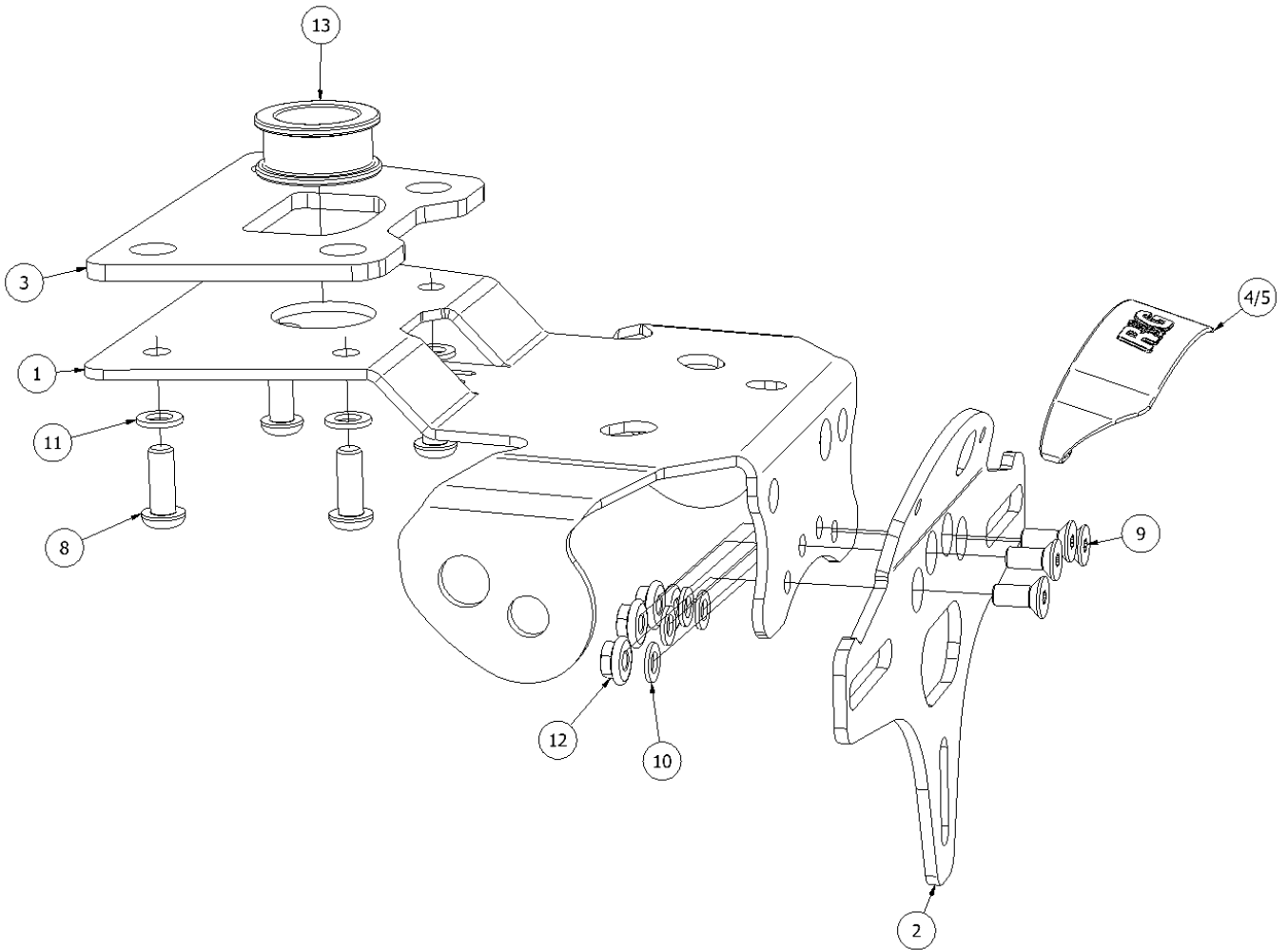
ITEM No.	DESCRIPTION	QTY
ITEM 1	ISS 2 TAIL TIDY BRACKET	1
ITEM 2	NUMBER PLATE BRACKET	1
ITEM 3	SPACER PLATE	1
ITEM 4	BRAKE/TAIL/NUMBER PLATE LIGHT ASSEMBLY	1
ITEM 5	LH0005 LIGHT HOUSING	1
ITEM 6	BULLET CONNECTORS	2
ITEM 7	BRAKE/TAIL/NUMBER PLATE LIGHT CONNECTOR	1
ITEM 8	M6x16mm BUTTON HEAD BOLT	4
ITEM 9	M5x16mm COUNTERSUNK BOLT	4
ITEM 10	M5x10mm FLAT WASHER	4
ITEM 11	M6x12mm FLAT WASHER	6
ITEM 12	M5 NYLOC NUT	4
ITEM 13	RUBBER BUNG	1
ITEM 14	150mm LENGTH OF HEAT-SHRINK	2
ITEM 15	2.5mm WIDEx75mm LONG CABLE TIES	3
ITEM 16	100mm LENGTH OF 18mm WIDE HEAT SHRINK	1
ITEM 17	50mm LENGTH OF SELF ADHESVIE FOAM	1
ITEM 18	REFLECTOR	1

R&G

Unit 1, Shelley's Lane, East Worldham, Alton, Hampshire, GU34 3AQ
 Tel: +44 (0)1420 89007 www.rg-racing.com Email: info@rg-racing.com



ASSEMBLY DIAGRAM 1



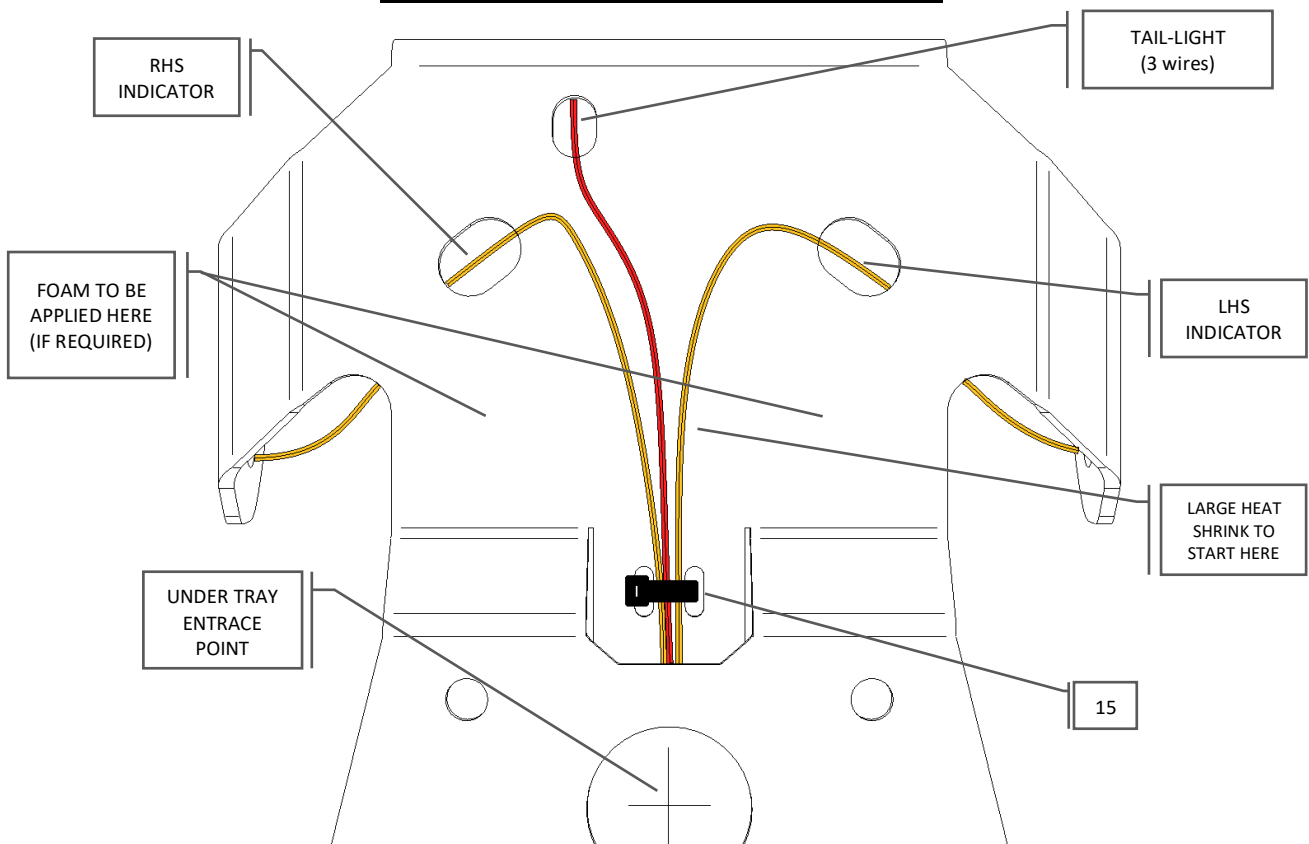
R&G

Unit 1, Shelley's Lane, East Worldham, Alton, Hampshire, GU34 3AQ

Tel: +44 (0)1420 89007 Fax: +44 (0)1420 87301 www.rg-racing.com Email: info@rg-racing.com



CABLE ROUTING DIAGRAM



FITTING INSTRUCTIONS

Before fitting the R&G tail tidy you will need to remove some OEM parts. Below is a list of parts to be removed.

- Passenger seat unit
- OEM number plate bracket
- OEM indicators (to re-use with Tail Tidy)

Tail Tidy Assembly

Before assembling this product, ensure all the components within the box are correct by comparing the legend and diagrams.

1. To start the assembly process, assemble the tail-light (**Items 4 & 5**) with the number plate bracket (**ITEM 2**) then attach the number plate bracket assembly to the main bracket (**Item 1**) using x4 of **ITEM 9**, **ITEM 10** and **ITEM 12**. As shown in **DIAGRAM 1**.
2. Before the Rubber bung (**ITEM 13**) can be mounted, you will need to cut a small cross into the centre of the flat face to increase the size of the access hole for the wires/connectors to pass through.

R&G

Unit 1, Shelley's Lane, East Worldham, Alton, Hampshire, GU34 3AQ

Tel: +44 (0)1420 89007 Fax: +44 (0)1420 87301 www.rg-racing.com Email: info@rg-racing.com



3. Now place the Rubber Grommet (**ITEM 13**) through the Licence plate bracket (**ITEM 1**) with the flat face on the underside of the bracket, as shown in **DIAGRAM 1**.
4. Attach the OEM indicators to the main bracket (**Item 1**) and pass the indicator and tail light cables through their individual routes, before passing the cables through the cable tie tab & rubber bung, apply the larger heat shrink (**Item 16**) over all cables to keep them together.
5. Once the heat shrink has been applied, push the cables through the opening then through the rubber bung and cable tie in the position shown in **Diagram 2**.
6. Reconnect the rear light plug socket, connect the licence plate illuminator using the supplied connector (**Item 7**), reconnect the indicators as original to the wiring loom.

R&G TAIL-LIGHT WIRING

GREEN = NEGATIVE

YELLOW = TAIL

BLUE = BRAKE

OEM TAIL-LIGHT CONNECTOR

BLACK = NEGATIVE

YELLOW = TAIL

BLUE = BRAKE

7. At this point you should connect the lights to the OEM wiring loom and test the function of the indicators, brake and tail-lights before fully fitting the tail tidy.

If nothing happens when you activate the brakes, you will need to switch the brake and tail-light wires. (yellow & blue)

TAIL TIDY FITMENT:

8. Now the assembly is ready to be mounted to the motorbike. To do so you will need x4 (**ITEM 8**) & (**ITEM 11**) and the spacer plate (**ITEM 3**). Use **DIAGRAM 1** to assist with where each ITEM goes.

MAKE SURE TO SLOT x1 WASHER (**ITEM 11**) ONTO ALL BOLTS (**ITEM 8**) BEFORE MOUNTING.

9. Carefully tighten each bolt, taking care not to cross thread them, once tight check the clearance between the undertray and the main bracket, if there is not enough clearance remove the tail tidy and use the supplied self adhesive foam, which can be applied to the top side of the bracket.
10. Then plug the connectors into the OEM loom and check indicator orientation. The OEM indicators have small screws just below the lenses which should be oriented at the bottom of the indicator.

ENSURE INDICATORS ARE CORRECT WAY AROUND BEFORE RIDING

11. Final step, re-install all OEM parts except from the OEM Number Plate Bracket. (The reflector within the kit in case a new number plate is required).

R&G

Unit 1, Shelley's Lane, East Worldham, Alton, Hampshire, GU34 3AQ

Tel: +44 (0)1420 89007 Fax: +44 (0)1420 87301 www.rg-racing.com Email: info@rg-racing.com



IMPORTANT: IF FITTING A FULL-SIZE LICENCE PLATE AND PLACING IT LOW DOWN ON THE LICENCE PLATE MOUNT, THERE IS A POTENTIAL CHANCE THE LICENCE PLATE COULD HIT THE BACK WHEEL UNDER HEAVY LOAD AND OVER LARGE BUMPS IN THE ROAD. IT IS YOUR RESPONSIBILITY TO CHECK FOR THIS POSSIBILITY AND TAKE AVOIDING ACTION. FAILURE TO CHECK THIS COULD RESULT IN SERIOUS INJURY.

ISS 4 11/08/2023 (TB)

CONSUMER NOTICE

The catalogue description and any exhibition of samples are only broad indications of the Products and R&G may make design changes which do not diminish their performance or visual appeal and supplying them in such state shall conform to the order. The Buyer acknowledges no representation or warranty (other than as to title) has been given or will apply to the Products other than those in R&G's order or confirmation and the Buyer confirms it has chosen the Products as being of merchantable quality and suitable for its particular purposes. Where R&G fits the Products or undertakes other services it shall exercise reasonable skill and care and rectify any fault free of charge unless the workmanship has been disturbed. The Buyer is responsible for ensuring that the warranty on the motorcycle is not affected by the fitting of the Products. On return of any defective Products R&G shall at its option either supply a replacement or refund the purchase money but shall not be liable if the Products have been modified or used or maintained otherwise than in accordance with R&G's or manufacturer's instructions and good engineering practice or if the defect arises from accident or neglect. Other than identified above and subject to R&G not limiting its liability for causing death and personal injury, it shall not be liable for indirect or consequential loss and otherwise its liability shall be limited to the amounts paid by the Buyer for the Products or the fitting or service concerned. These terms do not affect the Buyer's statutory rights.

R&G RACING RETURNS POLICY (NON-FAULTY GOODS)

Returns must be pre-authorized (if not pre-authorized the return will be rejected). Goods may only be returned direct to us if they were purchased direct from us (customer must prove if necessary). Otherwise to be returned to original vendor. Goods must be in re-sellable condition, in the opinion of R&G Racing. All returns are subject to a 25% restocking and handling fee (25% of the gross value exc. P&P – at the prevailing price at time of purchase). The customer must pay any and all carriage charges. No returns of discontinued products, unless within 14 days of purchase. This policy does not affect your statutory rights and does not refer to faulty goods.

R&G

Unit 1, Shelley's Lane, East Worldham, Alton, Hampshire, GU34 3AQ

Tel: +44 (0)1420 89007 Fax: +44 (0)1420 87301 www.rg-racing.com Email: info@rg-racing.com