



FITTING INSTRUCTIONS FOR LP0358 LICENCE PLATE BRACKET



**This kit contains the items pictured and labelled over page.
Some parts may be shown for clarity of instructions only.
Do not proceed until you are sure all parts are present.
Please read all instructions before proceeding.**

**IF IN ANY DOUBT WHEN FITTING OUR PRODUCTS, CONSULT ONE OF OUR DEALERS
OR HAVE FITTED BY A QUALIFIED TECHNICIAN.**

Please note that the way the kit is packed does not necessarily represent the way of mounting to the bike.

In the event of rubber washers being used to hold components onto bolts, these rubber washers can be thrown away.

**DIGITAL COPIES OF THESE INSTRUCTIONS ARE AVAILABLE FROM
WWW.RG-RACING.COM**



<u>TOOLS REQUIRED</u>	<u>GENERAL TORQUE SETTINGS</u>
<ul style="list-style-type: none"> • Set of metric Hex keys to include 3mm, 4mm and 5mm. • Set of metric sockets and wrench. To include 6, 8 & 10mm. <ul style="list-style-type: none"> • 8mm & 10mm spanners. • Phillips screwdriver. 	M4 BOLT = 8Nm M5 BOLT = 12Nm M6 BOLT = 15Nm M8 BOLT = 20Nm M10 BOLT = 40Nm M12 BOLT = 40Nm

LEGEND

ITEM No.	DESCRIPTION	QTY
ITEM 1	TB0348 PART 1 LICENCE PLATE BRACKET	1
ITEM 2	TB0348 PART 2 COVER PLATE	1
ITEM 3	LA0002 - NUMBER PLATE LIGHT	1
ITEM 4	M6 NYLOC NUT	2
ITEM 5	M6x30MM COUNTERSUNK BOLT	2
ITEM 6	M6x19mm WASHER	2
ITEM 7	M6x10MM COUNTERSUNK BOLT	1
ITEM 8	HEAT SHRINK 150MM LENGTH	2
ITEM 9	CON0003 - BULLET CONNECTORS (PACK)	1
ITEM 10	REFLECTOR	1

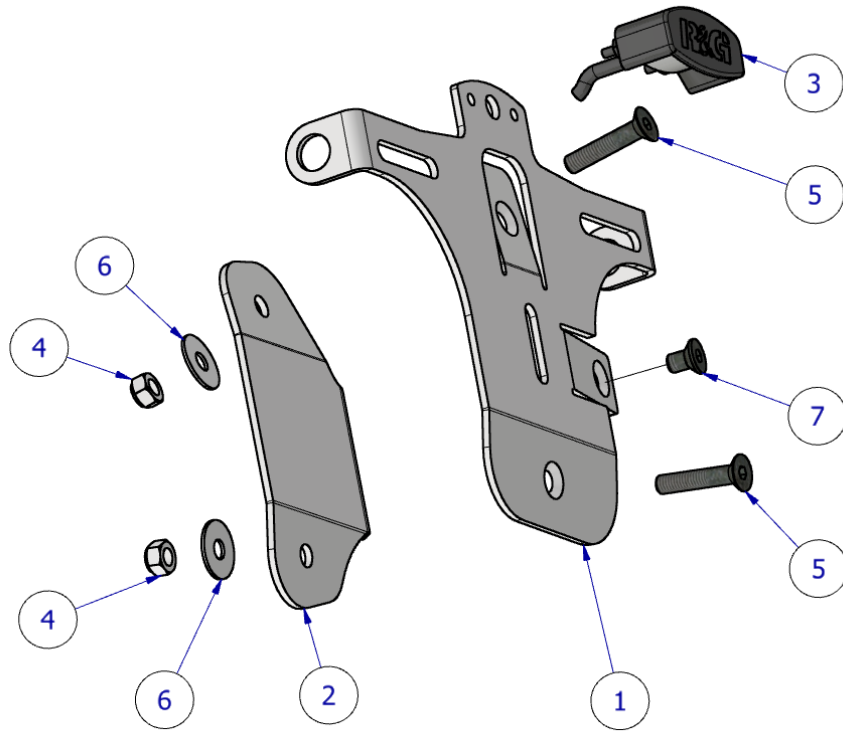
R&G

Unit 1, Shelley's Lane, East Worldham, Alton, Hampshire, GU34 3AQ

Tel: +44 (0)1420 89007 Fax: +44 (0)1420 87301 www.rg-racing.com Email: info@rg-racing.com



ASSEMBLY DIAGRAM 1



ASSEMBLY DIAGRAM 2



R&G



FITTING INSTRUCTIONS

1. Begin by removing the licence plate and licence plate mount from the bike, leaving the rubber mounting spacers in position.
2. Ensure to disconnect the indicators & licence plate illuminator when removing.
3. Remove the OEM indicators from the OEM licence plate holder, taking note of the wiring for each side.

Tail Tidy Assembly

Before assembling this product, ensure all the components within the box are correct by comparing the **legend** and **diagrams**.

4. To begin, Replace the connectors on the LA0002 by cutting the smaller bullet connectors from the wires. Strip back 10mm of wire insulation and re-crimp the wires into the CON0003 Bullet connectors (item 9).
5. Enclose the exposed wires in the heat-shrink provided (item 8)
6. Following assembly diagram 1 & 2. Affix the LA0002 Licence plate light (item 3) to the tail tidy bracket (item 1) using the M4 nuts provided and a 6mm socket or spanner.
7. Fit the OEM indicators in the same way they were removed, ensuring they are relocated to the corresponding side.
8. Using the longer M6x30mm countersunk bolts (item 5), place these through the two open holes on the swingarm as shown in assembly diagram 1.
9. Fix the remaining mount using the remaining M6 countersunk bolt (item 7) and screw into position.
10. Reconnect the OEM indicator wires and Licence plate illuminator using the bullet connectors. Ensure the indicators are reconnected to their original wires to ensure the indicators flash correctly.
11. Connect the licence plate illuminator wires to the original wiring, ensuring RED/GREEN and BLACK/ BROWN connections.
12. You should test the light function before proceeding, if lights do not function as expected, swap the bullet connectors around.
13. Route the wires back to their original position securing them to the inside of the licence plate mount arm.
14. Sandwich the OEM tail piece using the backing plate (item 2) and fix in position as shown in assembly diagram 1 using the M6 washers (item 6) and M6 Nuts (item 4).
15. Depending on local laws, attach enclosed reflector (item 10) in an appropriate location.
16. Test the licence plate illuminator and all lights before riding.

R&G

Unit 1, Shelley's Lane, East Worldham, Alton, Hampshire, GU34 3AQ

Tel: +44 (0)1420 89007 Fax: +44 (0)1420 87301 www.rg-racing.com Email: info@rg-racing.com



IMPORTANT: FOR SAFETY, ENSURE THE LICENCE PLATE IS PLACED AS HIGH AS POSSIBLE ON THE TAIL TIDY (IT MAY REQUIRE DRILLING). IF FITTING A LICENCE PLATE OF 200MM OR LONGER (INCLUDING ANY SHROUD OR REFLECTOR ATTACHMENT) TO THE BRACKET, BEFORE RIDING, FULLY COMPRESS THE SUSPENSION TO ENSURE NO PART OF THE ASSEMBLY CAN CONTACT THE TYRE WHILE THE VEHICLE IS IN MOTION OR UNDER LOAD. IT IS YOUR RESPONSIBILITY TO CHECK FOR THIS POSSIBILITY AND TAKE AVOIDING ACTION. FAILURE TO CHECK THIS COULD RESULT IN SERIOUS INJURY OR DAMAGE TO THE MOTORCYCLE.

ISSUE 3 23/11/2023 (DM)

CONSUMER NOTICE

The catalogue description and any exhibition of samples are only broad indications of the Products and R&G may make design changes which do not diminish their performance or visual appeal and supplying them in such state shall conform to the order. The Buyer acknowledges no representation or warranty (other than as to title) has been given or will apply to the Products other than those in R&G's order or confirmation and the Buyer confirms it has chosen the Products as being of merchantable quality and suitable for its particular purposes. Where R&G fits the Products or undertakes other services it shall exercise reasonable skill and care and rectify any fault free of charge unless the workmanship has been disturbed. The Buyer is responsible for ensuring that the warranty on the motorcycle is not affected by the fitting of the Products. On return of any defective Products R&G shall at its option either supply a replacement or refund the purchase money but shall not be liable if the Products have been modified or used or maintained otherwise than in accordance with R&G's or manufacturer's instructions and good engineering practice or if the defect arises from accident or neglect. Other than identified above and subject to R&G not limiting its liability for causing death and personal injury, it shall not be liable for indirect or consequential loss and otherwise its liability shall be limited to the amounts paid by the Buyer for the Products or the fitting or service concerned. These terms do not affect the Buyer's statutory rights.

R&G RACING RETURNS POLICY (NON-FAULTY GOODS)

Returns must be pre-authorized (if not pre-authorized the return will be rejected). Goods may only be returned direct to us if they were purchased direct from us (customer must prove if necessary). Otherwise to be returned to original vendor. Goods must be in re-sellable condition, in the opinion of R&G Racing. All returns are subject to a 25% restocking and handling fee (25% of the gross value exc. P&P - at the prevailing price at time of purchase). The customer must pay any and all carriage charges. No returns of discontinued products, unless within 14 days of purchase. This policy does not affect your statutory rights and does not refer to faulty goods.

R&G

Unit 1, Shelley's Lane, East Worldham, Alton, Hampshire, GU34 3AQ

Tel: +44 (0)1420 89007 Fax: +44 (0)1420 87301 www.rg-racing.com Email: info@rg-racing.com