



**FITTING INSTRUCTIONS FOR LP0328 LICENCE PLATE BRACKET
HARLEY DAVIDSON PAN AMERICA (SPECIAL) 2021-**



**This kit contains the items pictured and labelled over page.
Some parts may be shown for clarity of instructions only.
Do not proceed until you are sure all parts are present.
Please read all instructions before proceeding.**

**IF IN ANY DOUBT WHEN FITTING OUR PRODUCTS, CONSULT ONE OF OUR DEALERS
OR HAVE FITTED BY A QUALIFIED TECHNICIAN.**

Please note that the way the kit is packed does not necessarily represent the way of mounting to the bike.

In the event of rubber washers being used to hold components onto bolts, these rubber washers can be thrown away.

DIGITAL COPIES OF THESE INSTRUCTIONS ARE AVAILABLE FROM

WWW.RG-RACING.COM

R&G

Unit 1, Shelley's Lane, East Worldham, Alton, Hampshire, GU34 3AQ
Tel: +44 (0)1420 89007 Fax: +44 (0)1420 87301 www.rg-racing.com Email: info@rg-racing.com



<u>TOOLS REQUIRED</u>	<u>GENERAL TORQUE SETTINGS</u>
<ul style="list-style-type: none"> • Set of metric torx drivers including T40, T45. • 5mm Allen key. • 12mm spanner or socket. • Phillips screwdriver. • Small flat head screwdriver. 	<p>M4 BOLT = 8Nm</p> <p>M5 BOLT = 12Nm</p> <p>M6 BOLT = 15Nm</p> <p>M8 BOLT = 20Nm</p> <p>M10 BOLT = 40Nm</p> <p>M12 BOLT = 40Nm</p>

LEGEND

ITEM No.	DESCRIPTION	QTY
ITEM 1	TB0328 - TAIL BRACKET	1
ITEM 2	M6x20mm BUTTON HEAD BOLTS	4
ITEM 3	M6 WASHERS	4
ITEM 4	M6 NYLOC NUTS	4
ITEM 5	IWC0002 MINI INDICATOR WIRING COVERS	2
ITEM 6	150mm LENGTH OF HEAT SHRINK	3
ITEM 7	2.5mm CABLE TIES 220mm LONG	4
ITEM 8	REFL 3 - REFLECTOR	1
ITEM 9	MINI INDICATOR BLANKING GROMMET	1
ITEM 10	CON078 PLATE ILLUMINATOR CONNECTOR	1
ITEM 11	CON079 MINI INDICATOR CONNECTORS	2
ITEM 12	LA0002 - LICENSE PLATE ILLUMINATOR ASSEMBLY	1
ITEM 13	RB0004 RUBBER GROMMET	1

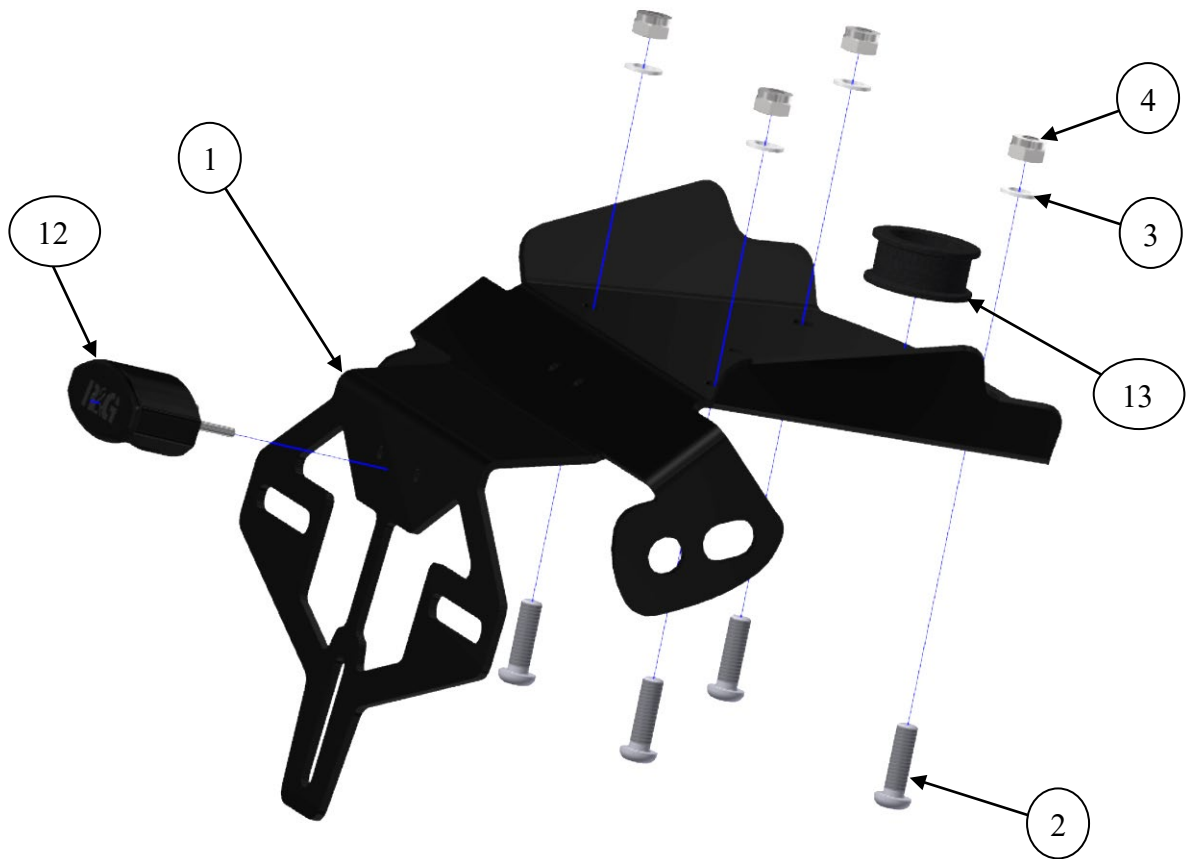
R&G

Unit 1, Shelley's Lane, East Worldham, Alton, Hampshire, GU34 3AQ

Tel: +44 (0)1420 89007 Fax: +44 (0)1420 87301 www.rg-racing.com Email: info@rg-racing.com



ASSEMBLY DIAGRAM





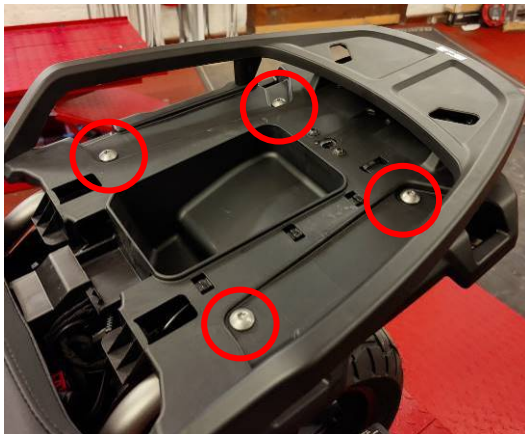
FITTING PICTURES



Picture 1



Picture 2



Picture 3



Picture 4



Picture 5

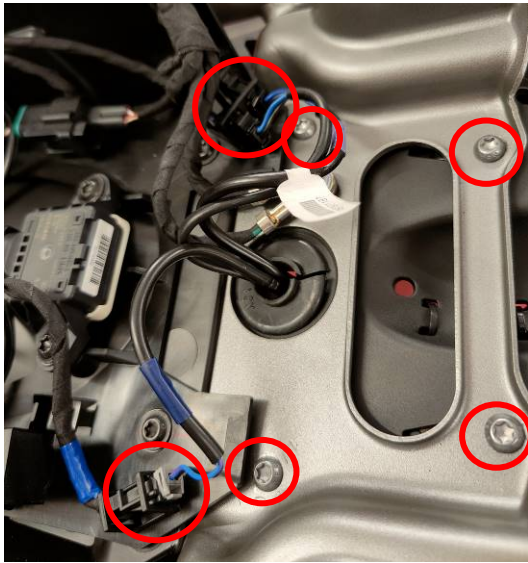


Picture 6

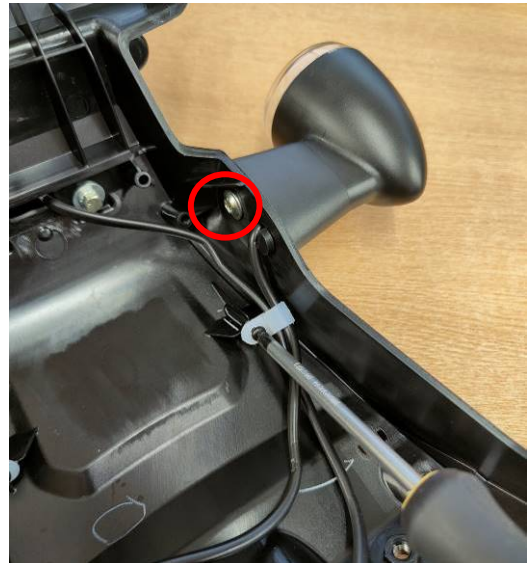
R&G

Unit 1, Shelley's Lane, East Worldham, Alton, Hampshire, GU34 3AQ

Tel: +44 (0)1420 89007 Fax: +44 (0)1420 87301 www.rg-racing.com Email: info@rg-racing.com



Picture 7



Picture 8



Picture 9



Picture 10



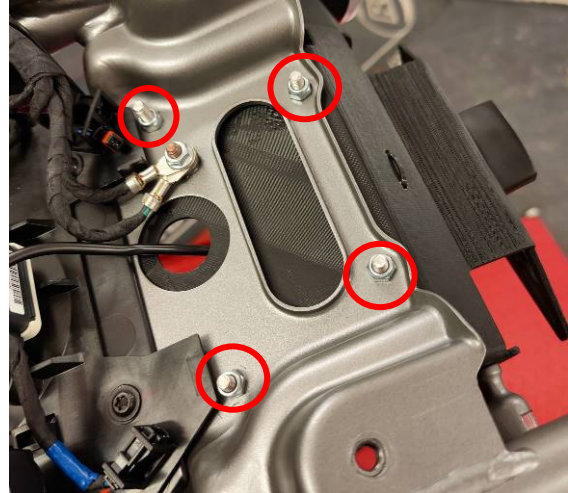
Picture 11



Picture 12



Picture 13



Picture 14



Picture 15

FITTING INSTRUCTIONS

- Use the key to remove the pillion seat unit, this can be lifted from the back as shown in **Picture 1 & 2**.
- Remove the 4 bolts shown in **Picture 3** with a T45 torx driver. This frees the undertray.
- Remove the main seat and lift up the undertray as shown in **Picture 5 & 6**. The undertray can be rested on the tank rather than fully removed.
- This exposes the tail lighting and license plate bracket bolts.
- Disconnect the indicator and plate light cables shown in **Picture 7**. Then remove the 4 bolts securing the license plate bracket (also shown in **Picture 7**) with a T40 torx driver.
- Now the OEM license plate holder can be removed from the bike.
- If re-using OEM indicators, free the cables from the OEM license plate holder by unscrewing the cable clips as shown in **Picture 8**.
- The indicators can then be removed by removing the bolt circled in **Picture 8**.
- Install the license plate illuminator (ITEM 12) to the R&G tail tidy as shown in Picture 9. It is secured with the small nuts provided with the illuminator.
- If using OEM indicators, thread the cables through the holes in the R&G tail tidy before securing with the OEM bolt which was removed from the OEM license plate holder as shown in **Picture**

R&G

Unit 1, Shelley's Lane, East Worldham, Alton, Hampshire, GU34 3AQ

Tel: +44 (0)1420 89007 Fax: +44 (0)1420 87301 www.rg-racing.com Email: info@rg-racing.com

**10, 11 & 12.**

- If using R&G mini or other aftermarket indicators, insert the cable and threaded stud through the hole and secure with the nut as shown in **Picture 13**.
- Now the R&G tail tidy can be bolted to the bike using the M6 nut and bolts provided as shown in **Picture 14**.
- Thread all cables through the hole into the undertray area where the connectors are. This hole can be sealed off with the rubber grommet provided (ITEM 13).
- All cables can be tidied up and secured to the bracket with the cable ties provided and the small holes in the bracket as shown in **Picture 15**.
- Use the connectors provided to connect the illuminator to the OEM connector as well as the indicators if required. Ensure that the indicators are correctly connected, and the correct side is flashing before riding.

IMPORTANT: IF FITTING A FULL-SIZE LICENCE PLATE AND PLACING IT FAR DOWN ON THE LICENCE PLATE HANGER, THERE IS A SMALL CHANCE OF THE LICENCE PLATE HITTING THE BACK WHEEL UNDER HEAVY LOAD AND OVER LARGE BUMPS IN THE ROAD. IT IS YOUR RESPONSIBILITY TO CHECK FOR THIS POSSIBILITY AND TAKE AVOIDING ACTION. FAILURE TO CHECK THIS COULD RESULT IN SERIOUS INJURY.

ISSUE 1 - 06/12/2021 - (WW)

CONSUMER NOTICE

The catalogue description and any exhibition of samples are only broad indications of the Products and R&G may make design changes which do not diminish their performance or visual appeal and supplying them in such state shall conform to the order. The Buyer acknowledges no representation or warranty (other than as to title) has been given or will apply to the Products other than those in R&G's order or confirmation and the Buyer confirms it has chosen the Products as being of merchantable quality and suitable for its particular purposes. Where R&G fits the Products or undertakes other services it shall exercise reasonable skill and care and rectify any fault free of charge unless the workmanship has been disturbed. The Buyer is responsible for ensuring that the warranty on the motorcycle is not affected by the fitting of the Products. On return of any defective Products R&G shall at its option either supply a replacement or refund the purchase money but shall not be liable if the Products have been modified or used or maintained otherwise than in accordance with R&G's or manufacturer's instructions and good engineering practice or if the defect arises from accident or neglect. Other than identified above and subject to R&G not limiting its liability for causing death and personal injury, it shall not be liable for indirect or consequential loss and otherwise its liability shall be limited to the amounts paid by the Buyer for the Products or the fitting or service concerned. These terms do not affect the Buyer's statutory rights.

R&G RACING RETURNS POLICY (NON-FAULTY GOODS)

Returns must be pre-authorized (if not pre-authorized the return will be rejected). Goods may only be returned direct to us if they were purchased direct from us (customer must prove if necessary). Otherwise to be returned to original vendor. Goods must be in re-sellable condition, in the opinion of R&G Racing. All returns are subject to a 25% restocking and handling fee (25% of the gross value exc. P&P - at the prevailing price at time of purchase). The customer must pay any and all carriage charges. No returns of discontinued products, unless within 14 days of purchase. This policy does not affect your statutory rights and does not refer to faulty goods.

R&G

Unit 1, Shelley's Lane, East Worldham, Alton, Hampshire, GU34 3AQ

Tel: +44 (0)1420 89007 Fax: +44 (0)1420 87301 www.rg-racing.com Email: info@rg-racing.com



**NOTICE DE MONTAGE POUR LP0328 SUPPORT DE PLAQUE
HARLEY DAVIDSON PAN AMERICA (SPECIAL) 2021-**



CE KIT CONTIENT LES ARTICLES ILLUSTRÉS ET ÉTIQUETES SUR LA PAGE.

CERTAINES PARTIES PEUVENT ÊTRE PRÉSENTES UNIQUEMENT POUR LA CLARTÉ DES INSTRUCTIONS.

NE PAS PROCÉDER AU MONTAGE TANT QUE VOUS N'ÊTES PAS SÛR QUE TOUTES LES PIÈCES SOIENT PRÉSENTES.

VEUILLEZ LIRE TOUTES LES INSTRUCTIONS AVANT DE CONTINUER.

EN CAS DE DOUTE LORS DU MONTAGE DE NOS PRODUITS, CONSULTEZ UN DE NOS REVENDEURS OU FAITES APPEL A UN TECHNICIEN QUALIFIÉ.

VEUILLEZ NOTER QUE LA FAÇON DONT LE KIT EST EMBALLÉ NE REPRÉSENTE PAS NECESSAIREMENT LA MANIÈRE DE LE MONTER SUR LA MOTO.

SI DES RONDELLES EN CAOUTCHOUC SONT UTILISÉES POUR MAINTENIR LES COMPOSANTS SUR LES BOULONS, ELLES PEUVENT ÊTRE JETÉES.

NOTICE DISPONIBLE AU TÉLÉCHARGEMENT SUR :
WWW.RG-RACING.COM

R&G

Unit 1, Shelley's Lane, East Worldham, Alton, Hampshire, GU34 3AQ
Tel: +44 (0)1420 89007 Fax: +44 (0)1420 87301 www.rg-racing.com Email: info@rg-racing.com



<u>OUTILS REQUIS</u>	<u>VALEURS DE SERRAGE</u>
<ul style="list-style-type: none"> • Clés Torx T40, T45. • Clé Allen 5mm. • Clé à molette 12mm. • Tournevis cruciforme. • Petit tournevis plat. 	<p>M4 BOULON = 8Nm</p> <p>M5 BOULON = 12Nm</p> <p>M6 BOULON = 15Nm</p> <p>M8 BOULON = 20Nm</p> <p>M10 BOULON = 40Nm</p> <p>M12 BOULON = 40Nm</p>

LÉGENDE

ARTICLE No.	DESCRIPTION	QTÉ
ARTICLE 1	TB0328 - SUPPORT DE PLAQUE	1
ARTICLE 2	M6x20mm BOULONS	4
ARTICLE 3	M6 RONDELLES	4
ARTICLE 4	M6 ÉCROUS	4
ARTICLE 5	IWC0002 CACHES FILS DE MINI CLIGNOTANTS	2
ARTICLE 6	150mm MANCHON THERMO RÉTRACTABLE	3
ARTICLE 7	2.5mm COLLIERS DE SERRAGE 220mm DE LONG	4
ARTICLE 8	REFL 3 - RÉFLECTEUR	1
ARTICLE 9	OEILLET D'OBTURATION DE MINI CLIGNOTANT	1
ARTICLE 10	CON078 CONNECTEUR DE FEU DE PLAQUE	1
ARTICLE 11	CON079 CONNECTEURS DE MINI CLIGNOTANTS	2
ARTICLE 12	LA0002 - ASSEMBLAGE DE FEU DE PLAQUE	1
ARTICLE 13	RB0004 OEILLET EN CAOUTCHOUC	1

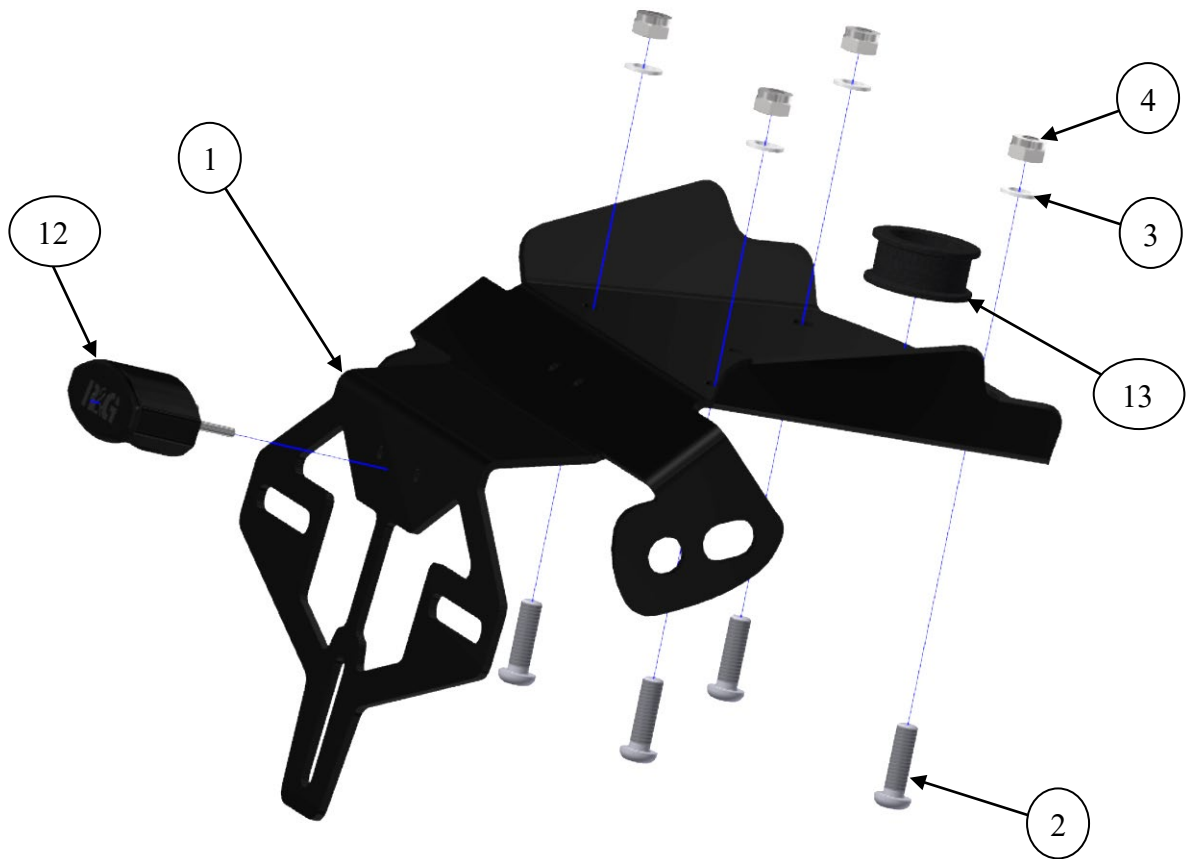
R&G

Unit 1, Shelley's Lane, East Worldham, Alton, Hampshire, GU34 3AQ

Tel: +44 (0)1420 89007 Fax: +44 (0)1420 87301 www.rg-racing.com Email: info@rg-racing.com



SCHÉMA D'ENSEMBLE





PHOTOS DE MONTAGE



Photo 1



Photo 2

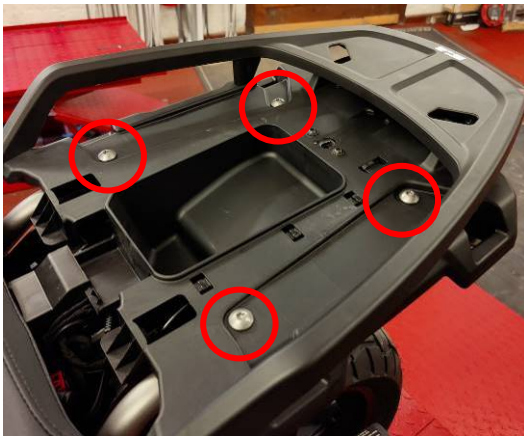


Photo 3



Photo 4



Photo 5



Photo 6

R&G

Unit 1, Shelley's Lane, East Worldham, Alton, Hampshire, GU34 3AQ

Tel: +44 (0)1420 89007 Fax: +44 (0)1420 87301 www.rg-racing.com Email: info@rg-racing.com

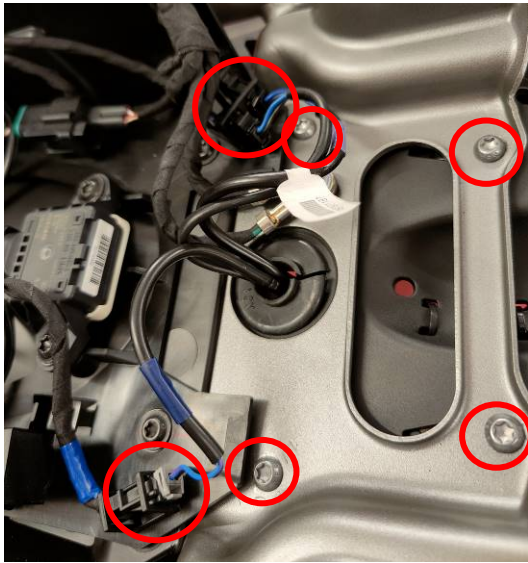


Photo 7

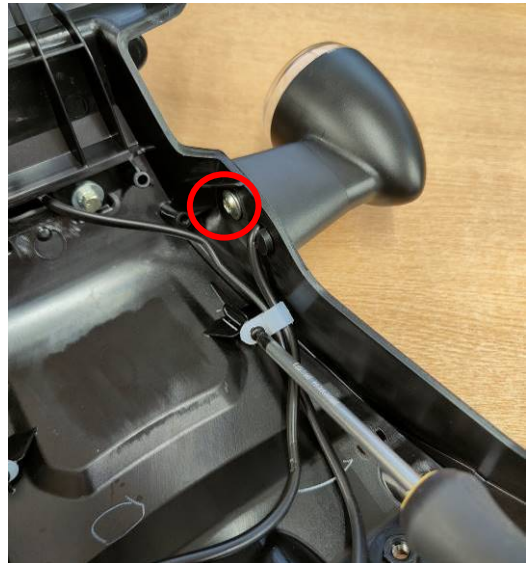


Photo 8



Photo 9



Photo 10



Photo 11



Photo 12



Photo 13

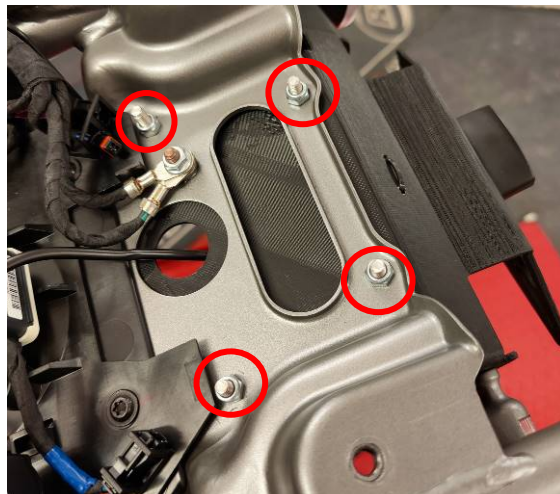


Photo 14



Photo 15

NOTICE DE MONTAGE

- Utilisez la clé pour retirer l'unité de siège passager, celle-ci peut être soulevée par l'arrière comme indiqué sur les photos 1 et 2.
- Retirez les 4 boulons illustrés sur la photo 3 avec un tournevis torx T45. Cela libère le passage de roue.
- Retirez le siège principal et soulevez le passage de roue comme indiqué sur les photos 5 et 6. Le passage de roue peut reposer sur le réservoir plutôt que de l'enlever complètement.
- Cela expose le feu arrière et les boulons du support de plaque d'immatriculation.
- Débranchez les câbles de clignotant et d'éclairage de plaque illustrés sur la photo 7. Retirez ensuite les 4 boulons fixant le support de plaque d'immatriculation (également illustrés sur la photo 7) à l'aide d'un tournevis torx T40.
- Maintenant, le support de plaque d'immatriculation d'origine peut être retiré de la moto.
- Si vous réutilisez des clignotants d'origine, libérez les câbles du support de plaque d'immatriculation d'origine en dévissant les serre-câbles comme indiqué sur la photo 8.
- Les clignotants peuvent ensuite être retirés en retirant la vis encerclée sur la Photo 8.
- Installez le feu de plaque d'immatriculation (ARTICLE 12) sur le support arrière R&G comme indiqué sur la photo 9. Il est fixé avec les petits écrous fournis avec l'éclairage.

R&G

Unit 1, Shelley's Lane, East Worldham, Alton, Hampshire, GU34 3AQ

Tel: +44 (0)1420 89007 Fax: +44 (0)1420 87301 www.rg-racing.com Email: info@rg-racing.com



- Si vous utilisez des clignotants d'origine, faites passer les câbles dans les trous du support R&G avant de les fixer avec le boulon d'origine qui a été retiré du support de plaque d'immatriculation d'origine, comme indiqué sur les photos 10, 11 et 12.
- Si vous utilisez les mini clignotants R&G ou d'autres clignotants de rechange, insérez le câble et le goujon fileté dans le trou et fixez-le avec l'écrou comme indiqué sur la photo 13.
- Maintenant, le support arrière R&G peut être boulonné sur la moto à l'aide de l'écrou et des boulons M6 fournis, comme indiqué sur la photo 14.
- Faites passer tous les câbles à travers le trou dans la zone du support où se trouvent les connecteurs. Ce trou peut être obturé avec le passe-fil en caoutchouc fourni (ARTICLE 13).
- Tous les câbles peuvent être rangés et fixés au support avec les colliers de serrage fournis et les petits trous dans le support comme indiqué sur la photo 15.
- Utilisez les connecteurs fournis pour connecter l'éclairage au connecteur d'origine ainsi que les clignotants si nécessaire. Assurez-vous que les clignotants soient correctement connectés et que le bon côté clignote avant de rouler.

IMPORTANT : SI VOUS INSTALLEZ UNE PLAQUE D'IMMATRICULATION DE GRANDE TAILLE ET LA PLACEZ LOIN VERS LE BAS SUR LE SUPPORT DE PLAQUE D'IMMATRICULATION, IL Y A UNE FAIBLE CHANCE QUE LA PLAQUE D'IMMATRICULATION FRAPPE LA ROUE ARRIÈRE SOUS L'EFFET D'UNE CHARGE LOURDE ET SUR DE GRANDES BOSSES SUR LA ROUTE. IL EST DE VOTRE RESPONSABILITÉ DE VÉRIFIER CETTE POSSIBILITÉ ET DE PRENDRE DES MESURES POUR L'ÉVITER. NE PAS VÉRIFIER CECI POURRAIT ENTRAÎNER DES BLESSURES GRAVES.

ISSUE 1 - 06/12/2021 - (WW)

CONSUMER NOTICE

The catalogue description and any exhibition of samples are only broad indications of the Products and R&G may make design changes which do not diminish their performance or visual appeal and supplying them in such state shall conform to the order. The Buyer acknowledges no representation or warranty (other than as to title) has been given or will apply to the Products other than those in R&G's order or confirmation and the Buyer confirms it has chosen the Products as being of merchantable quality and suitable for its particular purposes. Where R&G fits the Products or undertakes other services it shall exercise reasonable skill and care and rectify any fault free of charge unless the workmanship has been disturbed. The Buyer is responsible for ensuring that the warranty on the motorcycle is not affected by the fitting of the Products. On return of any defective Products R&G shall at its option either supply a replacement or refund the purchase money but shall not be liable if the Products have been modified or used or maintained otherwise than in accordance with R&G's or manufacturer's instructions and good engineering practice or if the defect arises from accident or neglect. Other than identified above and subject to R&G not limiting its liability for causing death and personal injury, it shall not be liable for indirect or consequential loss and otherwise its liability shall be limited to the amounts paid by the Buyer for the Products or the fitting or service concerned. These terms do not affect the Buyer's statutory rights.

R&G RACING RETURNS POLICY (NON-FAULTY GOODS)

Returns must be pre-authorized (if not pre-authorized the return will be rejected). Goods may only be returned direct to us if they were purchased direct from us (customer must prove if necessary). Otherwise to be returned to original vendor. Goods must be in re-sellable condition, in the opinion of R&G Racing. All returns are subject to a 25% restocking and handling fee (25% of the gross value exc. P&P - at the prevailing price at time of purchase). The customer must pay any and all carriage charges. No returns of discontinued products, unless within 14 days of purchase. This policy does not affect your statutory rights and does not refer to faulty goods.

R&G

Unit 1, Shelley's Lane, East Worldham, Alton, Hampshire, GU34 3AQ

Tel: +44 (0)1420 89007 Fax: +44 (0)1420 87301 www.rg-racing.com Email: info@rg-racing.com



**MONTAGEANLEITUNG FÜR LP0328 KENNZEICHENHALTER
HARLEY DAVIDSON PAN AMERICA (SPECIAL) 2021-**



Alle Kit-Teile sind auf den nachfolgenden Seiten abgebildet und gekennzeichnet.

Die abgebildeten Teile dienen lediglich zur Erklärung.

Überprüfen Sie zuerst, dass alle Teile vorhanden sind.

Lesen Sie die Montageanleitung komplett durch, bevor Sie anfangen.

**WENN SIE BEI DER MONTAGE DIESES PRODUKTES UNSICHER SIND, BITTE EINEN
UNSERER HÄNDLER KONTAKTIEREN ODER DAS KIT VON EINEM QUALIFIZIERTEN
ZWEIRAD-MECHANIKER MONTIEREN LASSEN.**

Die Verpackung der Teile stellt nicht die Reihenfolge der Montage dar.

Hinweis für Kits mit Plastikunterlegscheiben an den Schrauben –
Diese Plastik-Unterlegscheiben werden nicht für den Einbau benötigt.

**EINE DIGITALE VERSION DIESER MONTAGEANLEITUNG KANN AUF
FOLGENDER SEITE HERUNTERGELADEN WERDEN:**

WWW.RG-RACING.COM

R&G

Unit 1, Shelley's Lane, East Worldham, Alton, Hampshire, GU34 3AQ

Tel: +44 (0)1420 89007 Fax: +44 (0)1420 87301 www.rg-racing.com Email: info@rg-racing.com

**SIE BENÖTIGEN FOLGENDES WERKZEUG.**

- Satz Torx-Schlüssel inkl. T40, T45.
- 5mm Inbusschlüssel
- 12mm Steckschlüssel oder Schraubenschlüssel
- Kreuzschlitz-Schraubenzieher
- Flachklingen-Schraubenzieher

ALLGEM. ANZUGSDREHMOMENTE:

M4 SCHRAUBE = 8Nm
 M5 SCHRAUBE = 12Nm
 M6 SCHRAUBE = 15Nm
 M8 SCHRAUBE = 20Nm
 M10 SCHRAUBE = 40Nm
 M12 SCHRAUBE = 40Nm

LIEFERUMFANG

ARTIKEL NR.	BESCHREIBUNG	MENGE
ARTIKEL 1	TB0328 – KENNZEICHENHALTER	1
ARTIKEL 2	M6x20mm INBUSSCHRAUBE	4
ARTIKEL 3	M6 UNTERLEGSCHIEBE	4
ARTIKEL 4	M6 SELBSTSICHERNDE MUTTER	4
ARTIKEL 5	IWC0002 MINIBLINKER KABEL-ABDECKUNG	2
ARTIKEL 6	150mm SCHRUMPFSCHLAUCH	3
ARTIKEL 7	2.5mm KABELBINDER 220mm LÄNGE	4
ARTIKEL 8	REFL 3 – RÜCKSTRAHLER	1
ARTIKEL 9	GUMMITÜLLE FÜR MINIBLINKER	1
ARTIKEL 10	CON078 VERBINDUNG KENNZEICHENBELEUCHTUNG	1
ARTIKEL 11	CON079 VERBINDUNG MINIBLINKER	2
ARTIKEL 12	LA0002 – KENNZEICHENBELEUCHTUNG	1
ARTIKEL 13	RB0004 GUMMITÜLLE	1

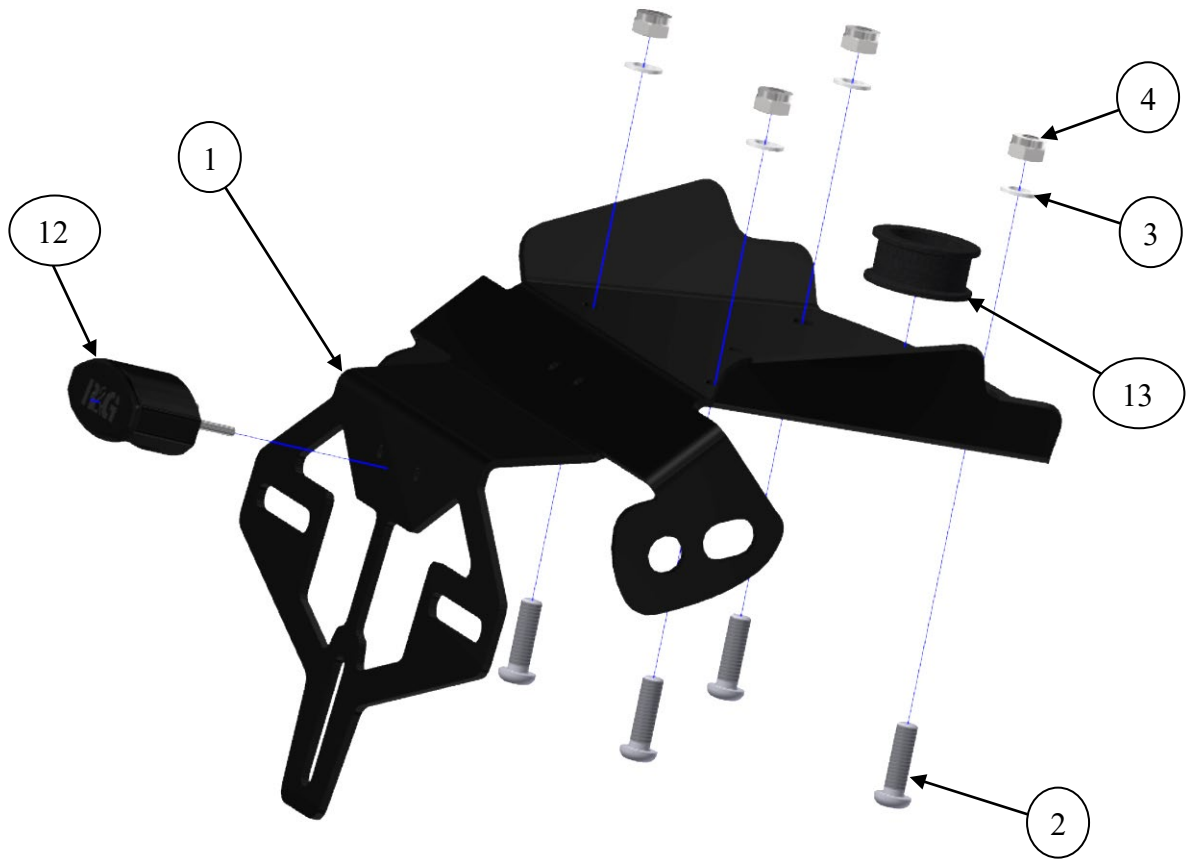
R&G

Unit 1, Shelley's Lane, East Worldham, Alton, Hampshire, GU34 3AQ

Tel: +44 (0)1420 89007 Fax: +44 (0)1420 87301 www.rg-racing.com Email: info@rg-racing.com



ZUSAMMENBAU - ZEICHNUNG



R&G

Unit 1, Shelley's Lane, East Worldham, Alton, Hampshire, GU34 3AQ

Tel: +44 (0)1420 89007 Fax: +44 (0)1420 87301 www.rg-racing.com Email: info@rg-racing.com



MONTAGE ABBILDUNGEN



Abbildung 1



Abbildung 2

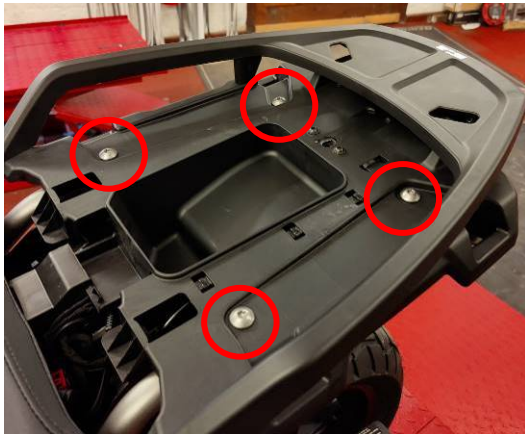


Abbildung 3



Abbildung 4



Abbildung 5



Abbildung 6

R&G

Unit 1, Shelley's Lane, East Worldham, Alton, Hampshire, GU34 3AQ

Tel: +44 (0)1420 89007 Fax: +44 (0)1420 87301 www.rg-racing.com Email: info@rg-racing.com

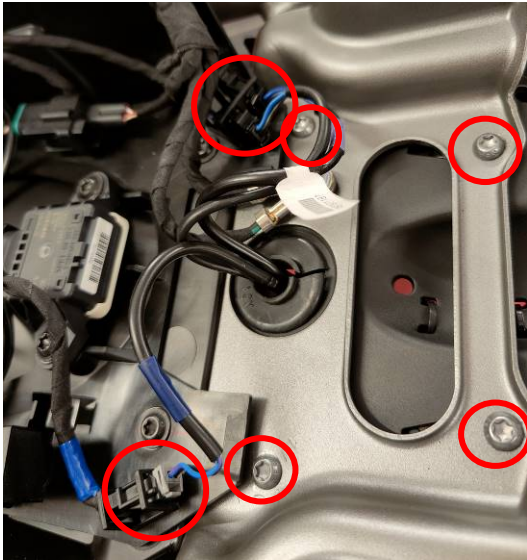


Abbildung 7

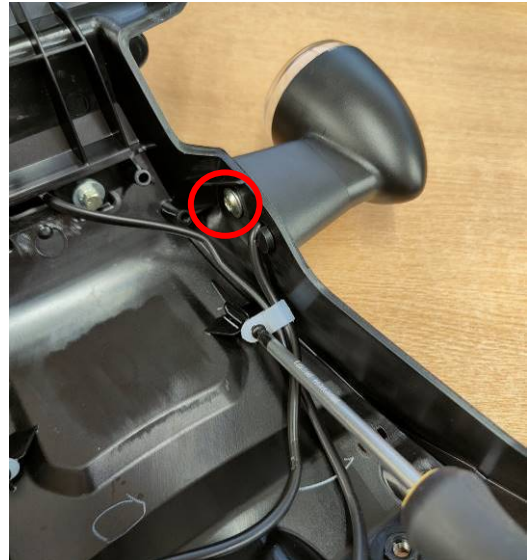


Abbildung 8



Abbildung 9



Abbildung 10



Abbildung 11



Abbildung 12



Abbildung 13

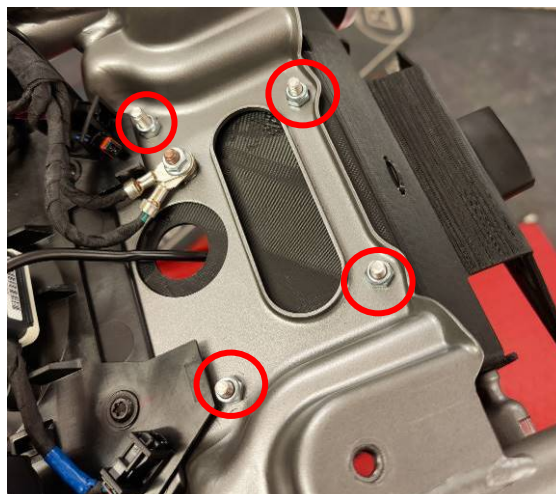


Abbildung 14



Abbildung 15

MONTAGEANLEITUNG

- Benutzen Sie den Schlüssel, um den Beifahrersitz zu entfernen. Der Sitz kann hinten angehoben werden wie in den **Abbildungen 1 & 2** abgebildet.
- Entfernen Sie die 4 Schrauben, die in **Abbildung 3** abgebildet sind mit einem T45 Torx-Schlüssel, um somit die untere Abdeckung zu lösen.
- Entfernen Sie den Fahrersitz und heben Sie die untere Abdeckung hoch wie in den **Abbildungen 5 & 6** abgebildet. Die untere Abdeckung kann auf den Tank gelegt werden und muss nicht komplett entfernt werden.
- Nun sind die Schrauben für die Kennzeichenbeleuchtung und den Kennzeichenhalter zugänglich.
- Trennen Sie die Kabel für die Blinker und die Kennzeichenbeleuchtung, die in **Abbildung 7** abgebildet sind. Dann entfernen Sie die 4 Schrauben, die den Kennzeichenhalter befestigen (auch in **Abbildung 7** abgebildet) mit einem T40 Torx-Schlüssel.
- Der original Kennzeichenhalter kann nun vom Motorrad entfernt werden.
- Wenn Sie die Originalblinker wieder verwenden, diese nun vom original Kennzeichenhalter entfernen, indem Sie die Kabelclips lösen wie in **Abbildung 8** abgebildet.
- Die Blinker können entfernt werden, indem Sie die Schraube entfernen, die in **Abbildung 8** mit einem Kreis markiert ist.
- Montieren Sie die Kennzeichenbeleuchtung (ARTIKEL 12) am R&G Kennzeichenhalter wie in **Abbildung 9** abgebildet und mit den kleinen Muttern (aus dem Beleuchtungs-Kit) befestigen.

R&G

Unit 1, Shelley's Lane, East Worldham, Alton, Hampshire, GU34 3AQ

Tel: +44 (0)1420 89007 Fax: +44 (0)1420 87301 www.rg-racing.com Email: info@rg-racing.com



- Wenn Sie die Originalblinker montieren, die Kabel in die Öffnungen am R&G-Kennzeichenhalter einführen und mit der Originalschraube befestigen, die zuvor vom original Kennzeichenhalter entfernt wurde (siehe **Abbildungen 10, 11 & 12**).
- Wenn Sie R&G Miniblinker oder andere Miniblinker aus dem Zubehörmarkt montieren, das Kabel und den Gewindebolzen in die Öffnung einführen und mit der Mutter befestigen wie in **Abbildung 13** abgebildet.
- Der R&G Kennzeichenhalter kann nun am Motorrad angeschraubt werden mit der M6 Mutter und Schraube vom Kit wie in **Abbildung 14** abgebildet
- Alle Kabel durch die Öffnung im Bereich der unteren Abdeckung führen zu den Verbindungen. Diese Öffnung kann mit der schwarzen Gummitülle vom Kit (ARTIKEL 13) abgedichtet werden.
- Alle Kabel können nun ordentlich mit den kleinen Öffnungen und Kabelbindern vom Kit befestigt werden wie in **Abbildung 15** abgebildet.
- Benutzen Sie die Verbindungen vom Kit, um die Beleuchtung mit dem original Verbinder und den Blinkern zu verbinden. Überprüfen Sie, dass die Blinker richtig angeschlossen sind und an der jeweils richtigen Seite blinken, bevor Sie mit dem Motorrad fahren.

WICHTIG: WENN EIN GROSSES KENNZEICHEN ZU WEIT NACH UNTEN MONTIERT WIRD, BESTEHT BEI SCHWERER LAST ODER DURCH GROSSE BODENWELLEN EIN GERINGES RISIKO, DASS DAS KENNZEICHEN AN DAS HINTERRAD STOSSEN KANN. ES LIEGT IN IHRER VERANTWORTUNG DIES ZU ÜBERPRÜFEN UND, WENN NOTWENDIG, VORZUBEUGENDE MASSNAHMEN ZU ERGREIFEN. DIE NICHTBEACHTUNG DIESER SICHERHEITSHINWEIS KANN ZU SCHWEREN VERLETZUNGEN FÜHREN.

AUSGABE 1 – 06/12/2021 - (WW)

CONSUMER NOTICE

The catalogue description and any exhibition of samples are only broad indications of the Products and R&G may make design changes which do not diminish their performance or visual appeal and supplying them in such state shall conform to the order. The Buyer acknowledges no representation or warranty (other than as to title) has been given or will apply to the Products other than those in R&G's order or confirmation and the Buyer confirms it has chosen the Products as being of merchantable quality and suitable for its particular purposes. Where R&G fits the Products or undertakes other services it shall exercise reasonable skill and care and rectify any fault free of charge unless the workmanship has been disturbed. The Buyer is responsible for ensuring that the warranty on the motorcycle is not affected by the fitting of the Products. On return of any defective Products R&G shall at its option either supply a replacement or refund the purchase money but shall not be liable if the Products have been modified or used or maintained otherwise than in accordance with R&G's or manufacturer's instructions and good engineering practice or if the defect arises from accident or neglect. Other than identified above and subject to R&G not limiting its liability for causing death and personal injury, it shall not be liable for indirect or consequential loss and otherwise its liability shall be limited to the amounts paid by the Buyer for the Products or the fitting or service concerned. These terms do not affect the Buyer's statutory rights.

R&G RACING RETURNS POLICY (NON-FAULTY GOODS)

Returns must be pre-authorized (if not pre-authorized the return will be rejected). Goods may only be returned direct to us if they were purchased direct from us (customer must prove if necessary). Otherwise to be returned to original vendor. Goods must be in re-sellable condition, in the opinion of R&G Racing. All returns are subject to a 25% restocking and handling fee (25% of the gross value exc. P&P – at the prevailing price at time of purchase). The customer must pay any and all carriage charges. No returns of discontinued products, unless within 14 days of purchase. This policy does not affect your statutory rights and does not refer to faulty goods.

R&G

Unit 1, Shelley's Lane, East Worldham, Alton, Hampshire, GU34 3AQ

Tel: +44 (0)1420 89007 Fax: +44 (0)1420 87301 www.rg-racing.com Email: info@rg-racing.com