



FITTING INSTRUCTIONS FOR RAP0014BK REAR INDICATOR ADAPTORS
FOR HONDA CB/CBR650R 2019-
FOR R&G M8 INDICATORS



THIS KIT CONTAINS THE ITEMS PICTURED AND LABELLED OVER PAGE.

SOME PARTS MAY BE SHOWN FOR CLARITY OF INSTRUCTIONS ONLY.

DO NOT PROCEED UNTIL YOU ARE SURE ALL PARTS ARE PRESENT.

PLEASE READ ALL INSTRUCTIONS BEFORE PROCEEDING.

**IF IN ANY DOUBT WHEN FITTING OUR PRODUCTS, CONSULT ONE OF OUR DEALERS
OR HAVE FITTED BY A QUALIFIED TECHNICIAN.**

PLEASE NOTE THAT THE WAY THE KIT IS PACKED DOES NOT NECESSARILY REPRESENT THE WAY OF
MOUNTING TO THE BIKE.

IN THE EVENT OF RUBBER WASHERS BEING USED TO HOLD COMPONENTS ONTO BOLTS,
THESE RUBBER WASHERS CAN BE THROWN AWAY.

DIGITAL COPIES OF THESE INSTRUCTIONS ARE AVAILABLE FROM:

WWW.RG-RACING.COM

R&G

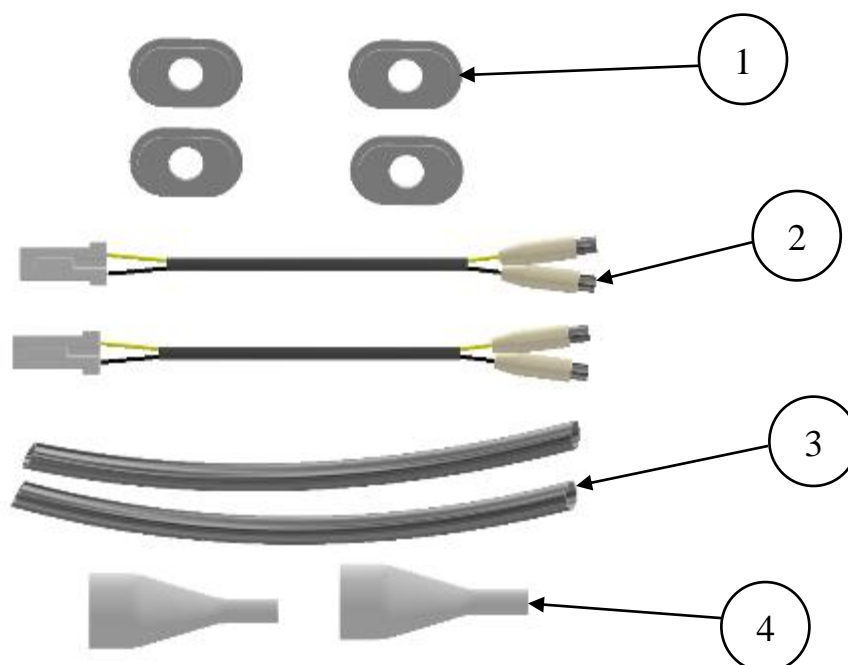
Unit 1, Shelley's Lane, East Worldham, Alton, Hampshire, GU34 3AQ
Tel: +44 (0)1420 89007 Fax: +44 (0)1420 87301 www.rg-racing.com Email: info@rg-racing.com



<u>TOOLS REQUIRED</u>	<u>GENERAL TORQUE SETTINGS</u>
<ul style="list-style-type: none"> • Set of metric Allen keys to include 3, 4, 5 & 6mm A/F size. • 8, 10 and 12mm spanners or sockets and wrench. • Phillips screwdriver. • Cable cutters. 	<p>M4 BOLT = 8Nm M5 BOLT = 12Nm M6 BOLT = 15Nm M8 BOLT = 20Nm M10 BOLT = 40Nm M12 BOLT = 40Nm</p>

LEGEND

ITEM NO.	DESCRIPTION	QTY
ITEM 1	MINI INDICATOR ADAPTORS (I0049)	4
ITEM 2	R&G MINI INDICATOR CONNECTORS (CON0009)	2
ITEM 3	180mm LENGTH OF HEATSHRINK	2
ITEM 4	MINI INDICATOR WIRING COVERS (IWC0002)	2



Parts Diagram

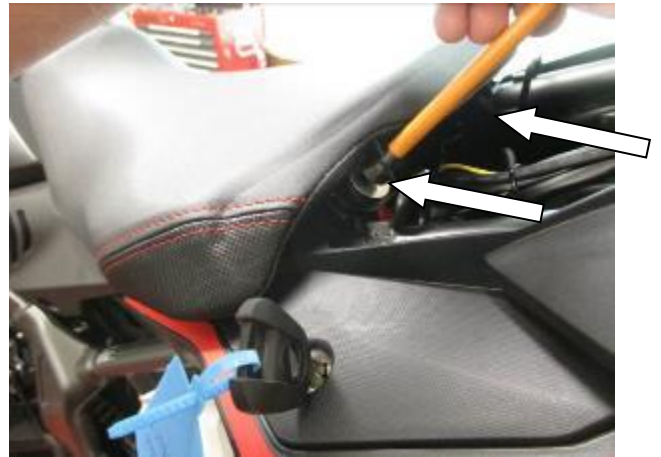
R&G

Unit 1, Shelley's Lane, East Worldham, Alton, Hampshire, GU34 3AQ

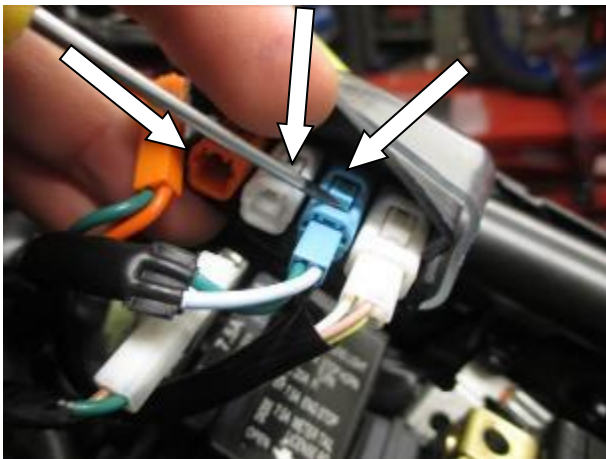
Tel: +44 (0)1420 89007 Fax: +44 (0)1420 87301 www.rg-racing.com Email: info@rg-racing.com



PICTURE 1



PICTURE 2



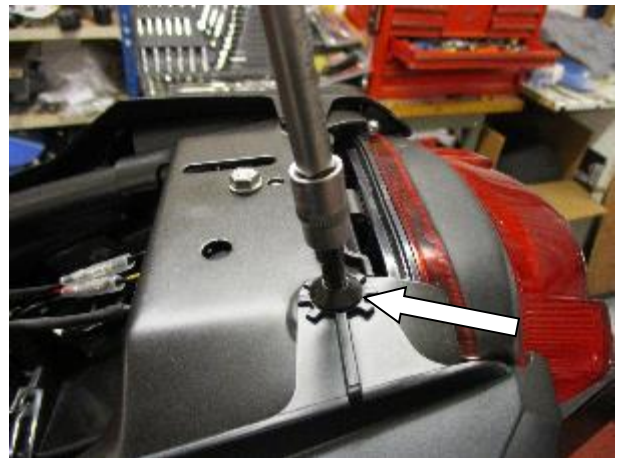
PICTURE 3



PICTURE 4



PICTURE 5

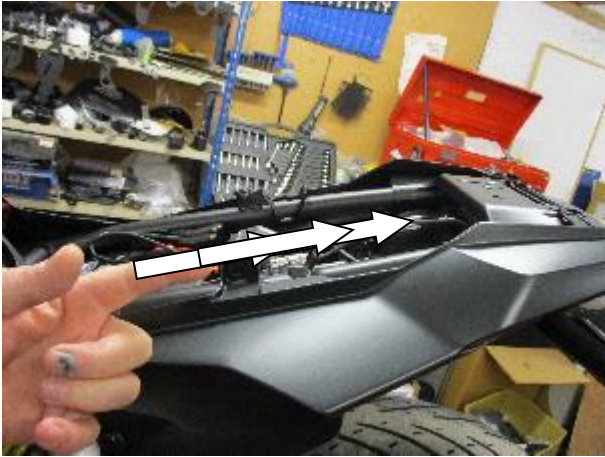


PICTURE 6

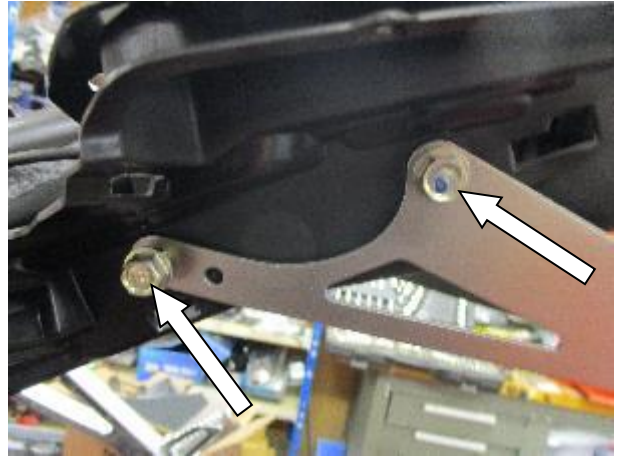
R&G

Unit 1, Shelley's Lane, East Worldham, Alton, Hampshire, GU34 3AQ

Tel: +44 (0)1420 89007 Fax: +44 (0)1420 87301 www.rg-racing.com Email: info@rg-racing.com



PICTURE 7



PICTURE 8



PICTURE 9



PICTURE 10



PICTURE 11

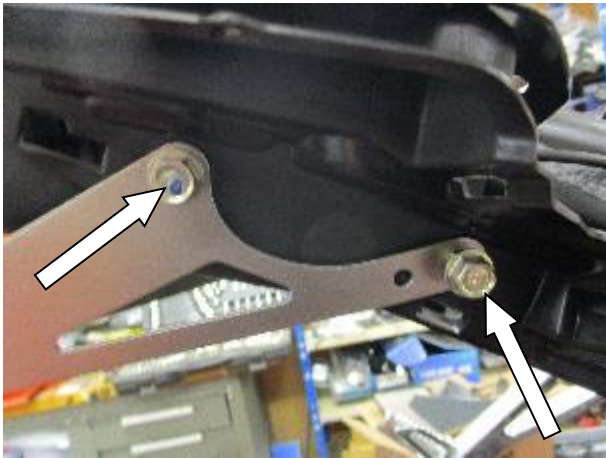


PICTURE 12

R&G

Unit 1, Shelley's Lane, East Worldham, Alton, Hampshire, GU34 3AQ

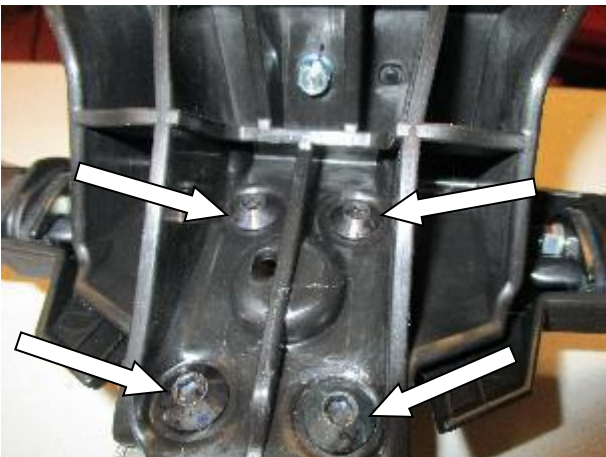
Tel: +44 (0)1420 89007 Fax: +44 (0)1420 87301 www.rg-racing.com Email: info@rg-racing.com



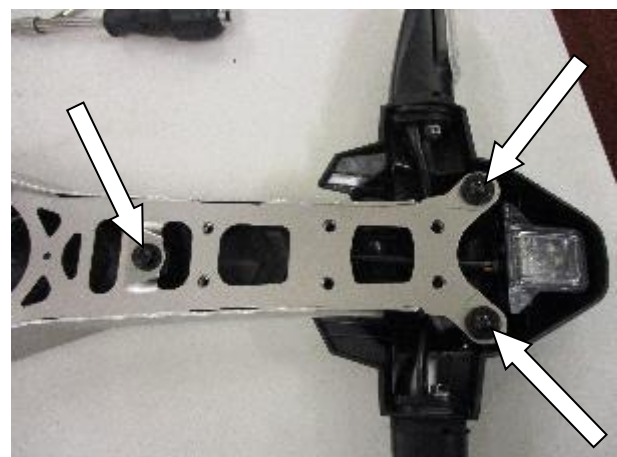
PICTURE 13



PICTURE 14



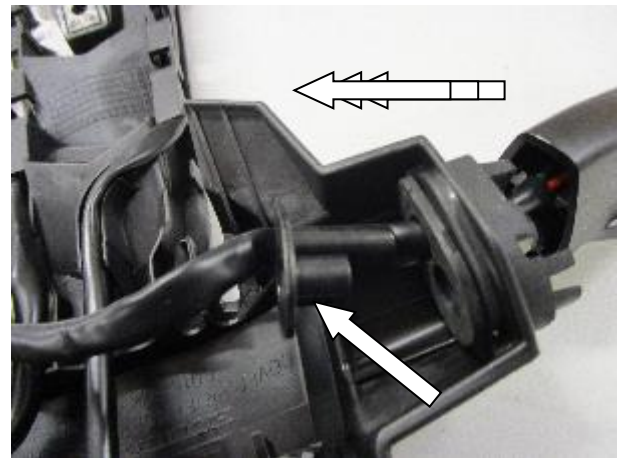
PICTURE 15



PICTURE 16



PICTURE 17

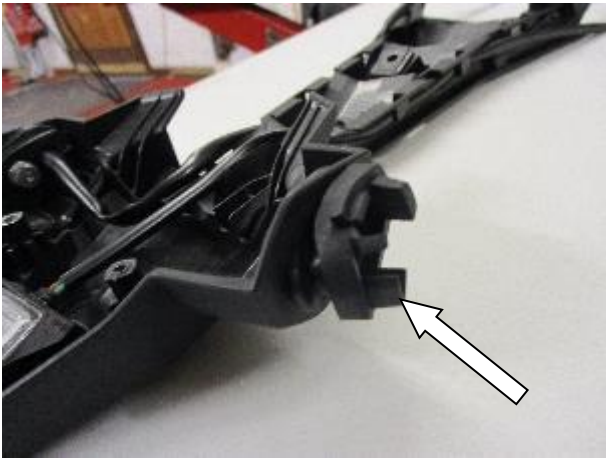


PICTURE 18

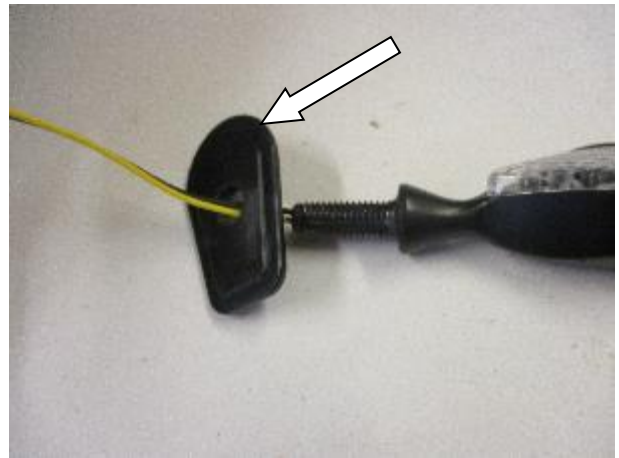
R&G

Unit 1, Shelley's Lane, East Worldham, Alton, Hampshire, GU34 3AQ

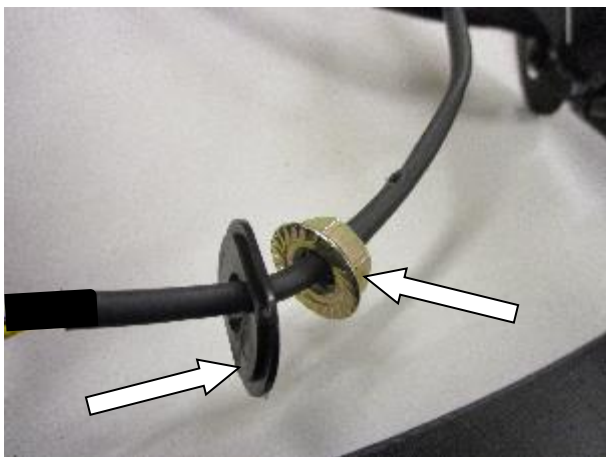
Tel: +44 (0)1420 89007 Fax: +44 (0)1420 87301 www.rg-racing.com Email: info@rg-racing.com



PICTURE 19



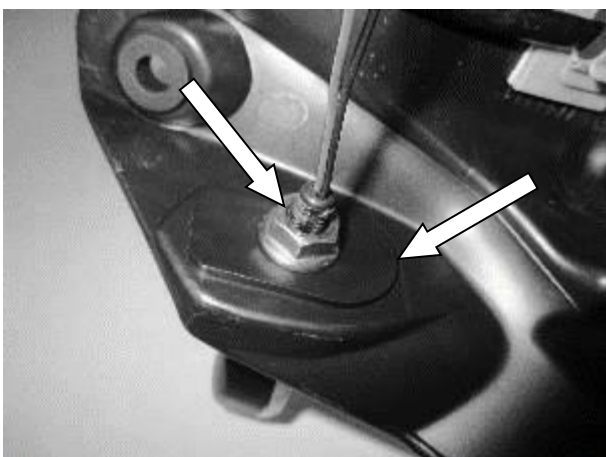
PICTURE 20



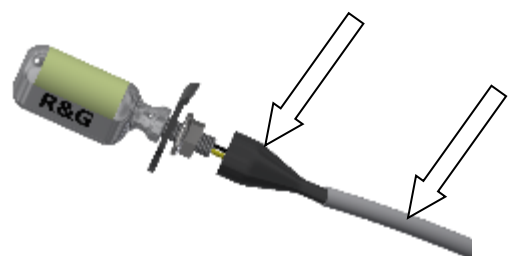
PICTURE 21



PICTURE 22



PICTURE 23



PICTURE 24

R&G

Unit 1, Shelley's Lane, East Worldham, Alton, Hampshire, GU34 3AQ

Tel: +44 (0)1420 89007 Fax: +44 (0)1420 87301 www.rg-racing.com Email: info@rg-racing.com



FITTING INSTRUCTIONS

- Remove the pillion seat, using the lock under the tail for the passenger seat (arrowed in **picture 1**). Then using a 5mm Allen key, remove the 2 rider seat bolts as shown in **picture 2**.
- Locate the OEM indicator and licence plate illuminator connectors under the rider seat. These come in a block and can be disconnected using a small flat bladed screwdriver to lift the plastic tab to disconnect the 3 connections arrowed in **picture 3**.
- Remove the plastic screw rivet arrowed in **picture 4**.
- Remove the two bolts arrowed in **pictures 5 and 6**.
- Carefully remove the left-hand side seat cowl as shown in **picture 7**.
- Loosen but do not remove the two bolts arrowed in **picture 8**.
- Remove the plastic screw rivet arrowed in **picture 9**.
- Remove the two bolts arrowed in **pictures 10 and 11**.
- Carefully remove the right-hand side seat cowl as shown in **picture 12**.
- Remove the four bolts arrowed in **pictures 13 and 8** then carefully lower this away from the bike while feeding the 3 disconnected wires through the plastic openings of the tail unit taking note of the wiring route.
- Remove the six Allen head bolts found on the underside of the OEM licence plate unit as shown in **pictures 14 and 15**.
- Remove the three bolts located on the under-side of the original bracket as shown in **picture 16**.
- After removing the fasteners detailed in the previous steps, the tail unit should easily come apart.
- Locate and remove the indicator securing bolt from the inside of the licence plate unit using an 8mm spanner as shown in **picture 17**.
- Remove the securing plate on the back of the indicator as shown in **picture 18** and put to one side for use later.
- Remove the indicator.
- The indicator mounting rubber can now be carefully pulled out of the tail unit by squeezing the rubber to release it from the mount as shown in **picture 19**.
- Repeat the above to remove the opposite indicator.

If using R&G Mini indicators:

NOTE: 1 x set of RGR0002 resistors (available separately) may be required to achieve the correct flash rate.

- To assemble your original tail tidy with mini-indicators, you will need to use the indicator adapter plates (**item 1**) included with the kit. Thread one spacer over the indicator wire with the larger surface against the indicator body as shown in **picture 20**.
- Thread the wire and indicator spacer through one indicator mount on the tail bracket as shown in **picture 22**. Thread the second indicator adapter plate (**item 1**) over the exposed wire followed by the indicator nut as shown in **picture 21** so both raised plastic bosses sit into the tail bracket as shown in **picture 23** and secure in place using the locking nut provided with the indicator. DO NOT overtighten.
- Thread one indicator wiring cover (**item 4**) over each pair of indicator wires (a small amount of lubricant or washing up liquid will help with this) as shown in **picture 24**.
- Fit one length of heat shrink (**Item 3**) over each pair of indicator wires and onto the wiring covers then gently heat with a hot air gun or hair dryer to neatly hold the wiring covers in place and protect the wires as shown in **picture 24**.
- Reassemble the licence plate bracket as original.
- Refit the licence plate bracket as original.
- Route the wiring as original and reconnect the licence plate illuminator as original.

R&G

Unit 1, Shelley's Lane, East Worldham, Alton, Hampshire, GU34 3AQ

Tel: +44 (0)1420 89007 Fax: +44 (0)1420 87301 www.rg-racing.com Email: info@rg-racing.com



- If using R&G mini-indicators reconnect using the two supplied connectors (**item 2**) to the original plug sockets. It is a good idea to check the indicators at this stage if illumination fails, please swap the bullet connections around (please note you may have to use resistors to achieve the correct flash rate).
- Refit and secure the seat surround as original.
- Refit the rider and pillion seats as original.
- Test the indicators lights before riding.
- **Please retest the indicators before riding.**

ISSUE 1 13/04/2021 (NSY)

CONSUMER NOTICE

The catalogue description and any exhibition of samples are only broad indications of the Products and R&G may make design changes which do not diminish their performance or visual appeal and supplying them in such state shall conform to the order. The Buyer acknowledges no representation or warranty (other than as to title) has been given or will apply to the Products other than those in R&G's order or confirmation and the Buyer confirms it has chosen the Products as being of merchantable quality and suitable for its particular purposes. Where R&G fits the Products or undertakes other services it shall exercise reasonable skill and care and rectify any fault free of charge unless the workmanship has been disturbed. The Buyer is responsible for ensuring that the warranty on the motorcycle is not affected by the fitting of the Products. On return of any defective Products R&G shall at its option either supply a replacement or refund the purchase money but shall not be liable if the Products have been modified or used or maintained otherwise than in accordance with R&G's or manufacturer's instructions and good engineering practice or if the defect arises from accident or neglect. Other than identified above and subject to R&G not limiting its liability for causing death and personal injury, it shall not be liable for indirect or consequential loss and otherwise its liability shall be limited to the amounts paid by the Buyer for the Products or the fitting or service concerned. These terms do not affect the Buyer's statutory rights.

R&G RETURNS POLICY (NON-FAULTY GOODS)

Returns must be pre-authorized (if not pre-authorized the return will be rejected). Goods may only be returned direct to us if they were purchased direct from us (customer must prove if necessary). Otherwise to be returned to original vendor. Goods must be in re-sellable condition, in the opinion of R&G. All returns are subject to a 25% restocking and handling fee (25% of the gross value exc. P&P – at the prevailing price at time of purchase). The customer must pay any and all carriage charges. No returns of discontinued products, unless within 14 days of purchase. This policy does not affect your statutory rights and does not refer to faulty goods.

R&G

Unit 1, Shelley's Lane, East Worldham, Alton, Hampshire, GU34 3AQ

Tel: +44 (0)1420 89007 Fax: +44 (0)1420 87301 www.rg-racing.com Email: info@rg-racing.com