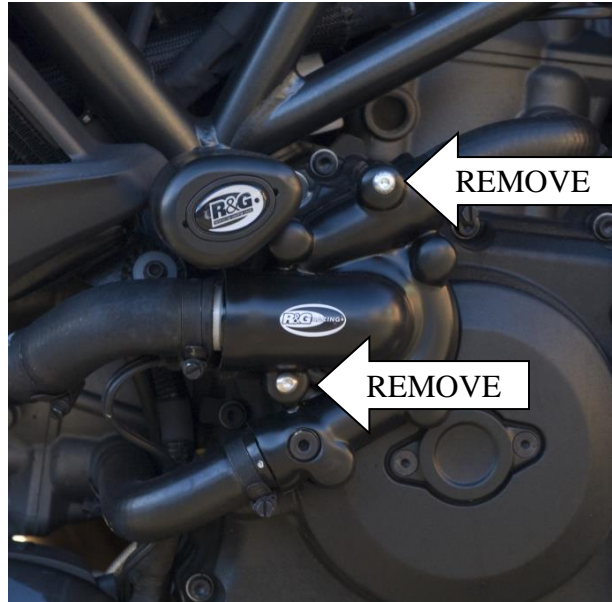




**FITTING INSTRUCTIONS FOR ECC0117 LHS WATER PUMP COVER
TO FIT DUCATI DIAVEL '11-, MONSTER 1200/S '14-, MULTISTRADA 1200 '15-**



In this kit there should be:

- 1 x Engine Case Cover (ECC0117).
- 2 x M6x45mm CAP HEAD BOLTS

PLEASE READ THESE INSTRUCTIONS FULLY BEFORE STARTING

- Please make sure the engine is cold before proceeding with the fitting of the R&G cover.
- Remove the two engine case bolts arrowed above. Hold the cover loosely over the case to help identify the correct ones.
- Offer up the R&G cover to the engine and carefully fit it over the water pump casing. Ensure that the R&G bolt holes are lined up with the holes in the engine casing and then push on as far as it will go.
- With a 5mm Allen key tighten the bolts equally so that they pull the cover into place. **DO NOT FULLY TIGHTEN.**
- Finally use a torque wrench set at 10 nm (7 Lb ft) to fully tighten.
- It is suggested that you check the tightness of the mounting bolts on a regular basis i.e. when cleaning or once a month.
- NOTE for the cleaning of this product you should only use a soft polishing cloth and a mild general cleaning agent.
- **AVOID HARMFUL CHEMICALS IF IN DOUBT DO NOT USE AS THEY COULD ALTER THE STRENGTH OF THE COVER.**
- R&G will accept no liability if the above procedure and torque settings are not followed.

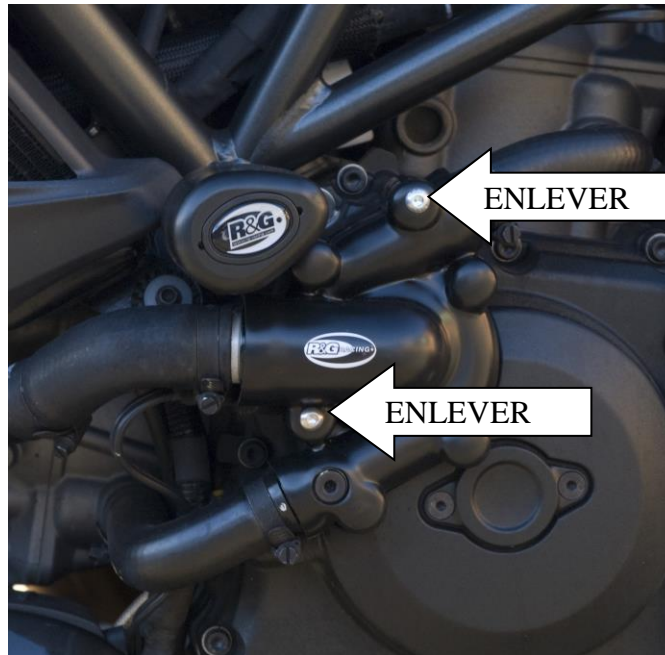
ISSUE 2 21/11/2022 NEW SPACER UPDATE

R&G RACING

Unit 1 Shelleys Lane, East Worldham, Alton, Hants GU34 3AQ
Tel: +44 (0)1420 89007 Fax: +44 (0)1420 87301 www.rg-racing.com Email: info@rg-racing.com



**INSTRUCTIONS DE MONTAGE POUR ECC0117 (COTE GAUCHE) PROTECTION POMPE A EAU
DUCATI DIAVEL '11-, MONSTER 1200/S '14-, MULTISTRADA 1200 '15-**



Le kit contient:

- 1 x protection carter moteur (ECC0117).
- 2 x M6x45mm Longs boulons

LIRE ATTENTIVEMENT LA NOTICE AVANT DE PROCEDER A L'INSTALLATION

- Veillez à ce que le moteur soit froid.
- Retirez les 2 vis du carter moteur comme flêché ci-dessus. Appliquer la protection uniquement pour identifier sa position correcte.
- Installer la protection sur le moteur et faire attention à bien l'appliquer autour de la pompe à eau. S'assurer que les trous de boulons R&G sont alignés avec les trous dans le carter moteur et pousser aussi loin que possible.
- Avec une clé Allen de 5mm serrer les boulons de façon égale afin que la protection se mette petit à petit et naturellement en place.
- Utiliser une clé dynamométrique réglée 10 nm (7 Lb ft) pour serrer complètement.

R&G RACING

Unit 1 Shelleys Lane, East Worldham, Alton, Hants GU34 3AQ
Tel: +44 (0)1420 89007 Fax: +44 (0)1420 87301 www.rg-racing.com Email: info@rg-racing.com



- **Note importante:**
 - vérifier le serrage des vis au moins une fois par mois.
 - Le nettoyage de la protection doit se faire à l'aide d'un produit nettoyant non agressif et à l'aide d'un chiffon doux.Aucune garantie ne sera acceptée par R&G en cas de mauvais couple de serrage et en cas d'utilisation de nettoyeurs trop agressifs qui pourraient détériorer l'efficacité de la protection.

CONSUMER NOTICE

The catalogue description and any exhibition of samples are only broad indications of the Products and R&G may make design changes which do not diminish their performance or visual appeal and supplying them in such state shall conform to the order. The Buyer acknowledges no representation or warranty (other than as to title) has been given or will apply to the Products other than those in R&G's order or confirmation and the Buyer confirms it has chosen the Products as being of merchantable quality and suitable for its particular purposes. Where R&G fits the Products or undertakes other services it shall exercise reasonable skill and care and rectify any fault free of charge unless the workmanship has been disturbed. The Buyer is responsible for ensuring that the warranty on the motorcycle is not affected by the fitting of the Products. On return of any defective Products R&G shall at its option either supply a replacement or refund the purchase money but shall not be liable if the Products have been modified or used or maintained otherwise than in accordance with R&G's or manufacturer's instructions and good engineering practice or if the defect arises from accident or neglect. Other than identified above and subject to R&G not limiting its liability for causing death and personal injury, it shall not be liable for indirect or consequential loss and otherwise its liability shall be limited to the amounts paid by the Buyer for the Products or the fitting or service concerned. These terms do not affect the Buyer's statutory rights.

R&G RACING RETURNS POLICY (NON-FAULTY GOODS)

Returns must be pre-authorized (if not pre-authorized the return will be rejected). Goods may only be returned direct to us if they were purchased direct from us (customer must prove if necessary). Otherwise to be returned to original vendor. Goods must be in re-sellable condition, in the opinion of R&G Racing. All returns are subject to a 25% restocking and handling fee (25% of the gross value exc. P&P – at the prevailing price at time of purchase). The customer must pay any and all carriage charges. No returns of discontinued products, unless within 14 days of purchase. This policy does not affect your statutory rights and does not refer to faulty goods.

R&G RACING

Unit 1 Shelleys Lane, East Worldham, Alton, Hants GU34 3AQ
Tel: +44 (0)1420 89007 Fax: +44 (0)1420 87301 www.rg-racing.com Email: info@rg-racing.com