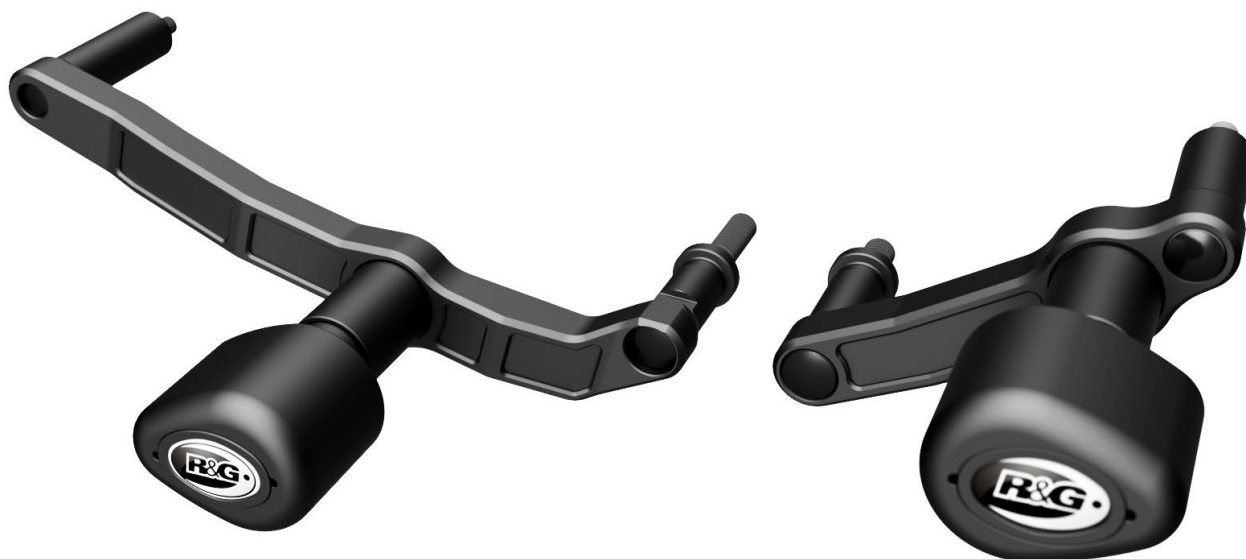




## **FITTING INSTRUCTIONS FOR CP0601 CRASH PROTECTORS**



**THIS KIT CONTAINS THE ITEMS PICTURED AND LABELLED OVER PAGE.**

SOME PARTS MAY BE SHOWN FOR CLARITY OF INSTRUCTIONS ONLY.

DO NOT PROCEED UNTIL YOU ARE SURE ALL PARTS ARE PRESENT.

**PLEASE READ ALL INSTRUCTIONS BEFORE PROCEEDING.**

**IF IN ANY DOUBT WHEN FITTING OUR PRODUCTS, CONSULT ONE OF OUR DEALERS  
OR HAVE FITTED BY A QUALIFIED TECHNICIAN.**

PLEASE NOTE THAT THE WAY THE KIT IS PACKED DOES NOT NECESSARILY REPRESENT THE WAY OF  
MOUNTING TO THE BIKE.

IN THE EVENT OF RUBBER WASHERS BEING USED TO HOLD COMPONENTS ONTO BOLTS,  
THESE RUBBER WASHERS CAN BE THROWN AWAY.



ITEM NO.	PART NUMBER	DESCRIPTION	QTY
ITEM 1	M0794	RHS MOUNTING BRACKET	1
ITEM 2	M0795	LHS MOUNTING BRACKET	1
ITEM 3	S1488	SPACER - INNER BASH PLATE - LHS/RHS	2
ITEM 4	S1489	OUTER BASH PLATE LHS SPACER	1
ITEM 5	S1490	OUTER BASH PLATE RHS SPACER	1
ITEM 6	S1491	RHS REAR SPACER	1
ITEM 7	S1492	LHS REAR SPACER	1
ITEM 8	S1493	CRASH BOBBIN SPACER	2
ITEM 9	B0431	M10 AERO BOBBINS	2
ITEM 10	M8x1.25x80mm	CAP HEAD BOLT - RHS REAR MOUNT	1
ITEM 11	M10x1.5x80mm	CAP HEAD BOLT - LHS REAR MOUNT	1
ITEM 12	M10x1.25x95mm	HEX HEAD BOLT - BOBBINS	2
ITEM 13	M12x1.25x80mm	CAP HEAD BOLT - LHS BASH PLATE	1
ITEM 14	M12x1.25x90mm	CAP HEAD BOLT - RHS BASH PLATE	1
ITEM 15	M10x20mm	FLAT WASHER	2
ITEM 16	LW0001	M12 SHAKE PROOF WASHER	2
ITEM 17	NC0009	M8 CAP HEAD BOLT CAP	2
ITEM 18	NC0010	M10 CAP HEAD BOLT CAP	1
ITEM 19	NC0011	M12 CAP HEAD BOLT CAP	1
ITEM 20	OR0002	O-RING	4
ITEM 21	BC0002	BOBBIN CAP	2

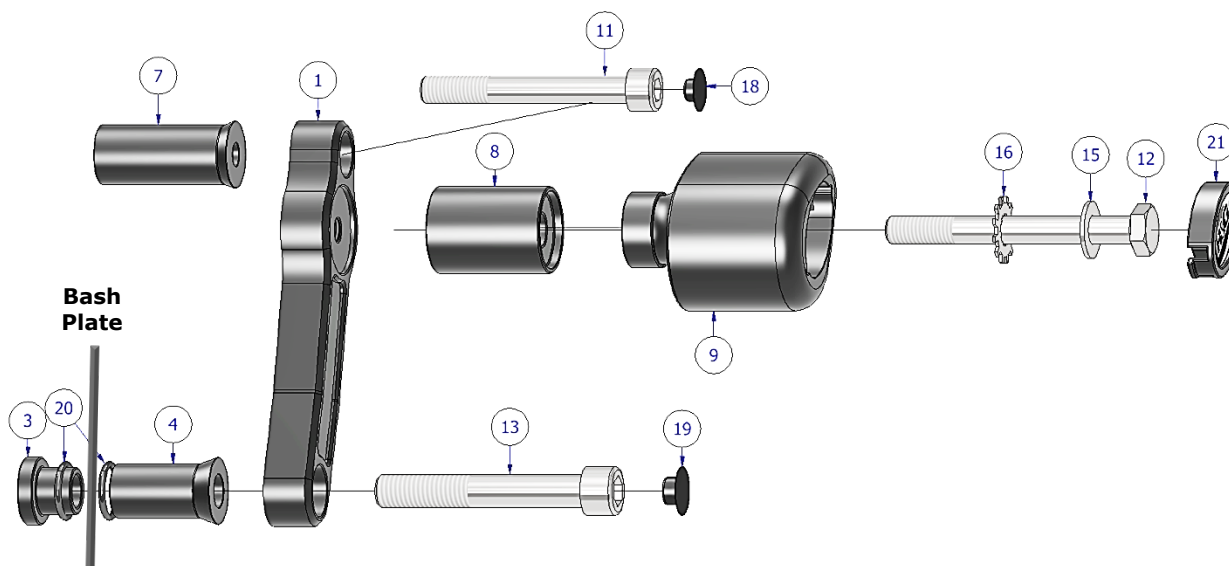
### **LEGEND**

<b><u>TOOLS REQUIRED</u></b>	<b><u>GENERAL TORQUE SETTINGS</u></b>
<ul style="list-style-type: none"> <li>• Socket set</li> <li>• Ratchet</li> <li>• Torque wrench (up to 50Nm).</li> </ul>	<p>M4 BOLT = 8Nm</p> <p>M5 BOLT = 12Nm</p> <p>M6 BOLT = 15Nm</p> <p>M8 BOLT = 20Nm</p> <p>M10 BOLT = 40Nm</p> <p>M12 BOLT = 40Nm</p>

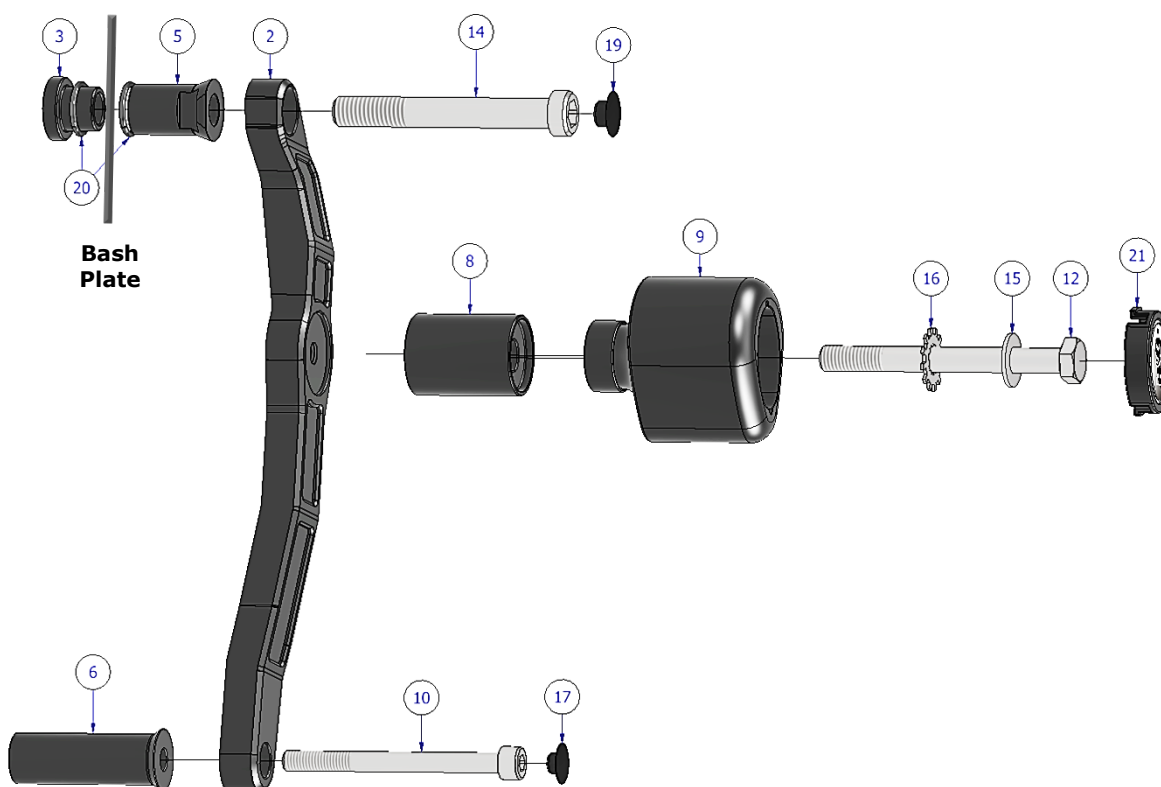


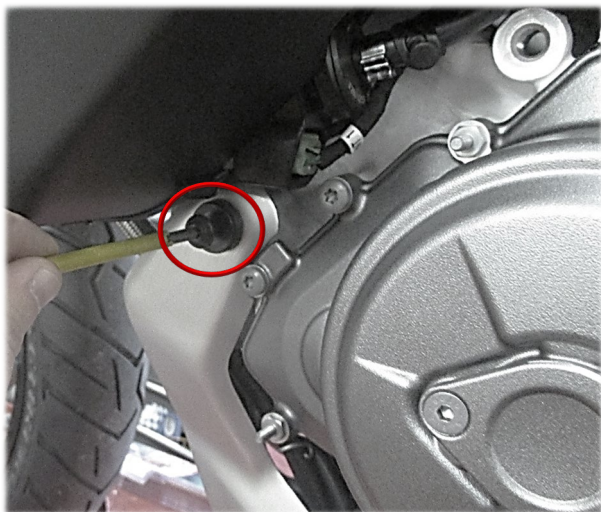
## EXPLODED DIAGRAMS

### LHS

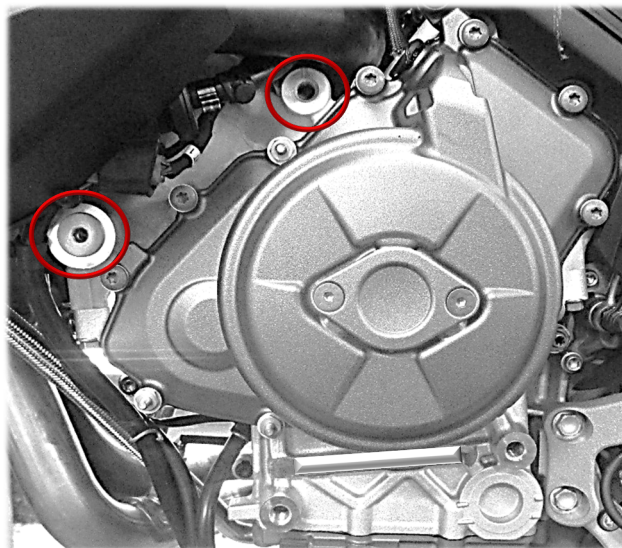


### RHS

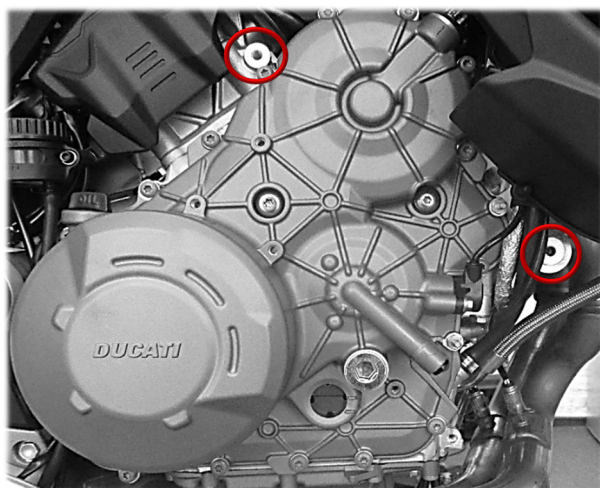




**Picture 1**



**Picture 2**



**Picture 3**



**Picture 4**



**Picture 5**

## **FITTING INSTRUCTIONS**

Racing Technique Ltd T/A R&G  
Unit 1, Shelley's Lane, East Worldham, Alton, Hampshire, GU34 3AQ  
Tel: +44 (0)1420 89007 [www.rg-racing.com](http://www.rg-racing.com) Email: [info@rg-racing.com](mailto:info@rg-racing.com)



## **Left Hand Side Assembly**

- Gather left hand side of the kit as shown in the **left-hand side assembly diagram** on **Page 3** using the following:
  - **Item 1:** RHS MOUNTING BRACKET
  - **Item 3:** SPACER - INNER BASH PLATE - LHS/RHS
  - **Item 4:** OUTER BASH PLATE LHS SPACER
  - **Item 7:** LHS REAR SPACER
  - **Item 8:** CRASH BOBBIN SPACER
  - **Item 9:** M10 AERO BOBBINS
  - **Item 11:** M10x1.5x80mm CAP HEAD BOLT - LHS REAR MOUNT
  - **Item 12:** M10x1.25x95mm HEX HEAD BOLT - BOBBINS
  - **Item 13:** M12x1.25x80mm CAP HEAD BOLT - LHS BASH PLATE
  - **Item 15:** M10x20mm FLAT WASHER
  - **Item 16:** M12 SHAKE PROOF WASHER
  - **Item 18:** M10 CAP HEAD BOLT CAP
  - **Item 19:** M12 CAP HEAD BOLT CAP
  - **Item 20:** 2X O-RINGS
  - **Item 21:** BOBBIN CAP

***Please note:*** If you require more space during the fitting process, the lower air ducts can easily be removed if required.

- Remove the OEM bash plate front mounting bolts, located at the front of the engine. The other two mounts towards the foot controls can be loosened slightly to allow the bash plate to rotate.
- Once the bash plate has been removed, you will need to remove the rubber grommets on the front mounts of the bash plate.
- The front bash plate mounts have thread inserts/adapters remove the inserts from both sides with the appropriate allen key, circled red on the left in **Picture 2** and right in **Picture 3**.
- Push the supplied rubber O-ring over the inner bash plate spacer as shown in the assembly diagram.
- Pass the inner bash plate spacer through the bash plates front mount, so that the larger diameter and the O-ring is on the inside of the bash plates mounting surface.
- Once in position, rotate the bash plate back up towards the mounts, sandwiching the spacer between the bash plate and the engine block.
- With the M12x1.25x80mm cap head bolt close to hand, offer up the outer bash plate spacer and mounting block.
- Push the bolt through both the mounting block and spacer, then loosely thread it into the mount.
- Rotate the mounting block up to align the rear mounting hole, put the spacer behind the mounting block and loosely thread the M10x1.5x80mm cap head bolt.
- Torque both bolts to manufacturers specifications.
- Apply the supplied M12 & M10 bolt caps to the bolt heads.
- Re-attach the lower air duct if previously removed.
- Attach the bobbin and spacer using the supplied M10x95mm bolt, M12 shake proof washer and M10 flat washer. Torque to 40Nm





## **Right Hand Side Assembly**

- Gather the right-hand side of the kit as shown in the **right-hand side assembly diagram** on **Page 3** using the following:
  - **Item 2:** LHS MOUNTING BRACKET
  - **Item 3:** SPACER - INNER BASH PLATE - LHS/RHS
  - **Item 5:** OUTER BASH PLATE RHS SPACER
  - **Item 6:** RHS REAR SPACER
  - **Item 8:** CRASH BOBBIN SPACER
  - **Item 9:** M10 AERO BOBBINS
  - **Item 10:** M8x1.25x80mm CAP HEAD BOLT - RHS REAR MOUNT
  - **Item 12:** M10x1.25x95mm HEX HEAD BOLT - BOBBINS
  - **Item 14:** M12x1.25x90mm CAP HEAD BOLT - FRONT BASH PLATE
  - **Item 15:** M10x20mm FLAT WASHER
  - **Item 16:** M12 SHAKE PROOF WASHER
  - **Item 17:** M8 CAP HEAD BOLT CAP
  - **Item 19:** M12 CAP HEAD BOLT CAP
  - **Item 20:** 2X O-RINGS
  - **Item 21:** BOBBIN CAP

***Please note:*** If you require more space during the fitting process, the lower air ducts can easily be removed if required.

- Repeat the process on the left-hand side using the two mounts shown in **Picture 3**.
- On this side, there is a clearance groove cut into the front mounting spacer. While tightening the front mounting bolt please ensure this is facing upwards towards the edge of the air duct closest to the spacer.

ISSUE 1 - 15/01/2026 - (TB)

### **CONSUMER NOTICE**

The catalogue description and any exhibition of samples are only broad indications of the Products and R&G may make design changes which do not diminish their performance or visual appeal and supplying them in such state shall conform to the order. The Buyer acknowledges no representation or warranty (other than as to title) has been given or will apply to the Products other than those in R&G's order or confirmation and the Buyer confirms it has chosen the Products as being of merchantable quality and suitable for its particular purposes. Where R&G fits the Products or undertakes other services it shall exercise reasonable skill and care and rectify any fault free of charge unless the workmanship has been disturbed. The Buyer is responsible for ensuring that the warranty on the motorcycle is not affected by the fitting of the Products. On return of any defective Products R&G shall at its option either supply a replacement or refund the purchase money but shall not be liable if the Products have been modified or used or maintained otherwise than in accordance with R&G's or manufacturer's instructions and good engineering practice or if the defect arises from accident or neglect. Other than identified above and subject to R&G not limiting its liability for causing death and personal injury, it shall not be liable for indirect or consequential loss and otherwise its liability shall be limited to the amounts paid by the Buyer for the Products or the fitting or service concerned. These terms do not affect the Buyer's statutory rights.

### **R&G RACING RETURNS POLICY (NON-FAULTY GOODS)**

Returns must be pre-authorised (if not pre-authorised the return will be rejected). Goods may only be returned direct to us if they were purchased direct from us (customer must prove if necessary). Otherwise to be returned to original vendor. Goods must be in re-sellable condition, in the opinion of R&G Racing. All returns are subject to a 25% restocking and handling fee (25% of the gross value exc. P&P – at the prevailing price at time of purchase). The customer must pay any and all carriage charges. No returns of discontinued products, unless within 14 days of purchase. This policy does not affect your statutory rights and does not refer to faulty goods.