



FITTING INSTRUCTIONS CP0549 RACE CRASH PROTECTORS



PICTURE A

THIS KIT CONTAINS THE ITEMS PICTURED AND LABELLED OVER PAGE.

SOME PARTS MAY BE SHOWN FOR CLARITY OF INSTRUCTIONS ONLY.

DO NOT PROCEED UNTIL YOU ARE SURE ALL PARTS ARE PRESENT.

PLEASE READ ALL INSTRUCTIONS BEFORE PROCEEDING.

**IF IN ANY DOUBT WHEN FITTING OUR PRODUCTS, CONSULT ONE OF OUR DEALERS
OR HAVE FITTED BY A QUALIFIED TECHNICIAN.**

PLEASE NOTE THAT THE WAY THE KIT IS PACKED DOES NOT NECESSARILY REPRESENT THE WAY OF
MOUNTING TO THE BIKE.

IN THE EVENT OF RUBBER WASHERS BEING USED TO HOLD COMPONENTS ONTO BOLTS,
THESE RUBBER WASHERS CAN BE THROWN AWAY.

DIGITAL COPIES OF THESE INSTRUCTIONS ARE AVAILABLE FROM:

WWW.RG-RACING.COM

R&G Racing
Unit 1, Shelley's Lane, East Worldham, Alton, Hampshire, GU34 3AQ
Tel: +44 (0)1420 89007 Fax: +44 (0)1420 87301 www.rg-racing.com Email: info@rg-racing.com



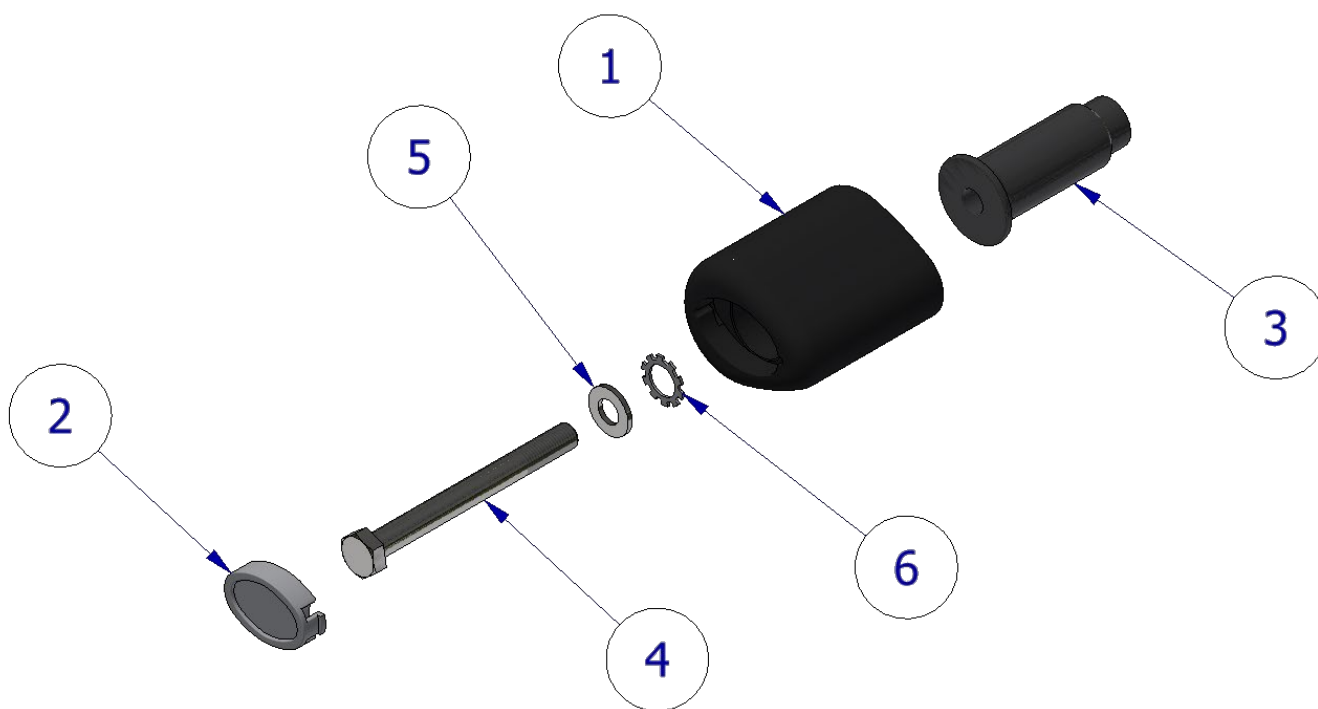
<u>TOOLS REQUIRED</u>	<u>GENERAL TORQUE SETTINGS</u>
<ul style="list-style-type: none"> • Socket set to include T45 Torx bit and 17mm A/F socket and wrench. • Torque wrench (up to 40Nm). 	<p>M4 BOLT = 8Nm</p> <p>M5 BOLT = 12Nm</p> <p>M6 BOLT = 15Nm</p> <p>M8 BOLT = 20Nm</p> <p>M10 BOLT = 40Nm</p> <p>M12 BOLT = 40Nm</p>

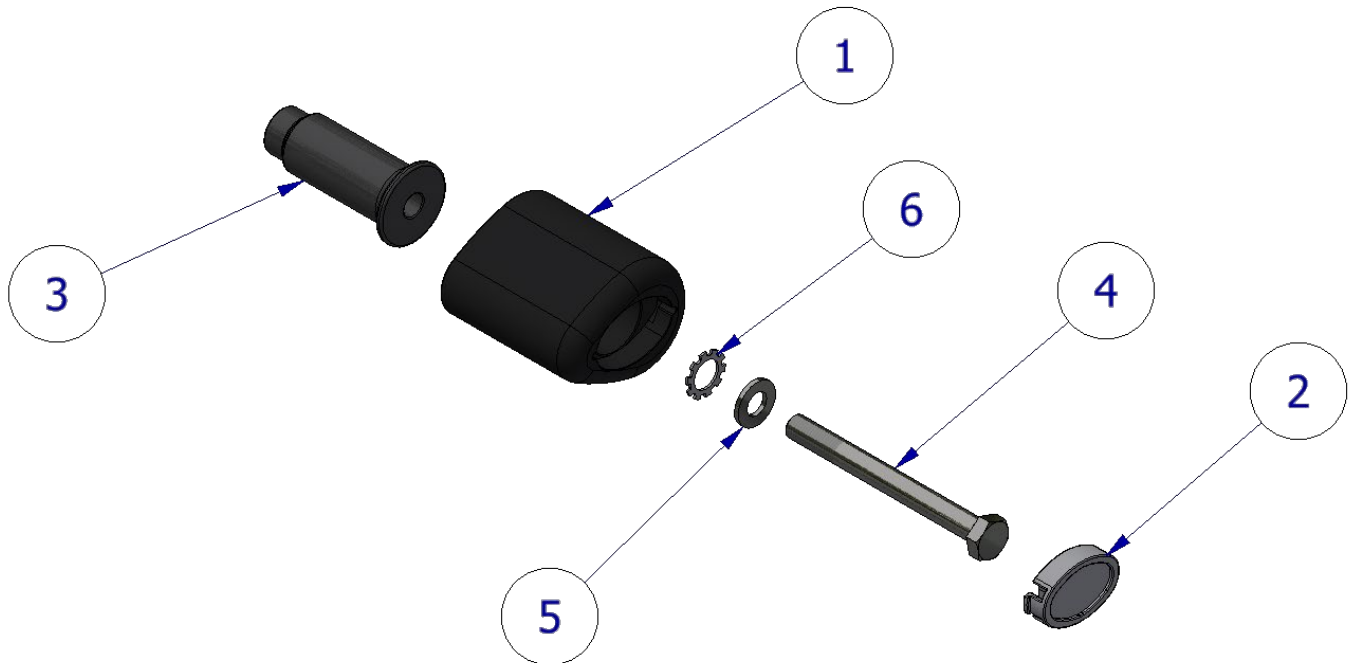
LEGEND

ITEM NO.	DESCRIPTION	QTY
ITEM 1	CRASH BOBBIN (BOO61)	2
ITEM 2	BOBBIN CAP (BC0002)	2
ITEM 3	SPACER (S1449)	2
ITEM 4	M10 x 140mm BOLT	2
ITEM 5	M10 WASHER	2
ITEM 6	LOCKING WASHER	2

LHS & RHS EXPLODED ASSEMBLY VIEW

LHS



**RHS****FITTING INSTRUCTIONS**

Before removing engine bolts, ensure the bike is upright and supported by a suitable engine stand or jack placed under the sump of the motorbike to support the partial weight of the engine, this will prevent the engine from moving during fitting. DO NOT REMOVE MORE THAN 1 ENGINE BOLT AT ANY TIME.

- Remove the bolt in position arrowed in picture 'A' on page 1.
- Place one of the plain washers (**Item 5**) onto one of the hex headed bolts (**Item 4**) as shown in the left hand side assembly.
- Place one of the locking washers (**Item 6**) over the bolt and against the washer just fitted as shown in the LHS assembly.
- Place the bolt with both washers through one of the crash protectors (**Item 1**) as shown in the LHS assembly.
- Place one of the spacers (**Item 3**) over the exposed end of the bolt and against the crash protector as shown in the LHS assembly.
- Offer this assembly into position as shown in picture 'A' on page 1. Finally tighten the crash protector bolts until you feel some compression from inside the protector using 17mm socket and wrench. **PLEASE NOTE THE CRASH PROTECTOR MUST BE POSITIONED AS SHOWN IN THE ASSEMBLY DIAGRAMS WITH BIGGER END TOWARD FRONT OF BIKE.** Turn a little more so that you feel the compression increase slightly. Then apply a quarter turn. **Tighten to 40Nm of torque (do not exceed this figure, as damage can occur to the motorcycle and the bolt).**
- If not already fitted, fit bubble sticker into recess of crash protector cap (**Item 2**).
- Fit crash protector cap (**Item 1**) into the crash protector.
- REPEAT THE ABOVE STEPS FOR THE RHS.

R&G Racing

Unit 1, Shelley's Lane, East Worldham, Alton, Hampshire, GU34 3AQ

Tel: +44 (0)1420 89007 Fax: +44 (0)1420 87301 www.rg-racing.com Email: info@rg-racing.com



See more R&G products for your Motorcycle in the link below:

[R&G Racing | All Products for GasGas - SM700 \(2022\) \(rg-racing.com\)](http://www.rg-racing.com)

ISSUE 1 - 12/01/2023 (MH)

CONSUMER NOTICE

The catalogue description and any exhibition of samples are only broad indications of the Products and R&G may make design changes which do not diminish their performance or visual appeal and supplying them in such state shall conform to the order. The Buyer acknowledges no representation or warranty (other than as to title) has been given or will apply to the Products other than those in R&G's order or confirmation and the Buyer confirms it has chosen the Products as being of merchantable quality and suitable for its particular purposes. Where R&G fits the Products or undertakes other services it shall exercise reasonable skill and care and rectify any fault free of charge unless the workmanship has been disturbed. The Buyer is responsible for ensuring that the warranty on the motorcycle is not affected by the fitting of the Products. On return of any defective Products R&G shall at its option either supply a replacement or refund the purchase money but shall not be liable if the Products have been modified or used or maintained otherwise than in accordance with R&G's or manufacturer's instructions and good engineering practice or if the defect arises from accident or neglect. Other than identified above and subject to R&G not limiting its liability for causing death and personal injury, it shall not be liable for indirect or consequential loss and otherwise its liability shall be limited to the amounts paid by the Buyer for the Products or the fitting or service concerned. These terms do not affect the Buyer's statutory rights.

R&G RACING RETURNS POLICY (NON-FAULTY GOODS)

Returns must be pre-authorized (if not pre-authorized the return will be rejected). Goods may only be returned direct to us if they were purchased direct from us (customer must prove if necessary). Otherwise to be returned to original vendor. Goods must be in re-sellable condition, in the opinion of R&G Racing. All returns are subject to a 25% restocking and handling fee (25% of the gross value exc. P&P – at the prevailing price at time of purchase). The customer must pay any and all carriage charges. No returns of discontinued products, unless within 14 days of purchase. This policy does not affect your statutory rights and does not refer to faulty goods.

R&G Racing

Unit 1, Shelley's Lane, East Worldham, Alton, Hampshire, GU34 3AQ

Tel: +44 (0)1420 89007 Fax: +44 (0)1420 87301 www.rg-racing.com Email: info@rg-racing.com



NOTICE DE MONTAGE POUR CP0549 PROTECTIONS CRASH DE COMPÉTITION



PHOTO A

CE KIT CONTIENT LES ARTICLES ILLUSTRÉS ET ÉTIQUETES SUR LA PAGE.

CERTAINES PARTIES PEUVENT ÊTRE PRÉSENTES UNIQUEMENT POUR LA CLARTE DES INSTRUCTIONS.

NE PAS PROCÉDER AU MONTAGE TANT QUE VOUS N'ÊTES PAS SÛR QUE TOUTES LES PIÈCES SOIENT PRÉSENTES.

VEUILLEZ LIRE TOUTES LES INSTRUCTIONS AVANT DE CONTINUER.

EN CAS DE DOUTE LORS DU MONTAGE DE NOS PRODUITS, CONSULTEZ UN DE NOS REVENDEURS OU FAITES APPEL À UN TECHNICIEN QUALIFIÉ.

VEUILLEZ NOTER QUE LA FAÇON DONT LE KIT EST EMBALLÉ NE REPRÉSENTE PAS NECESSAIREMENT LA MANIÈRE DE LE MONTER SUR LA MOTO.

SI DES RONDELLES EN CAOUTCHOUC SONT UTILISÉES POUR MAINTENIR LES COMPOSANTS SUR LES BOULONS, ELLES PEUVENT ÊTRE JETÉES.

NOTICE DISPONIBLE AU TÉLÉCHARGEMENT SUR :

WWW.RG-RACING.COM

R&G Racing

Unit 1, Shelley's Lane, East Worldham, Alton, Hampshire, GU34 3AQ

Tel: +44 (0)1420 89007 Fax: +44 (0)1420 87301 www.rg-racing.com Email: info@rg-racing.com



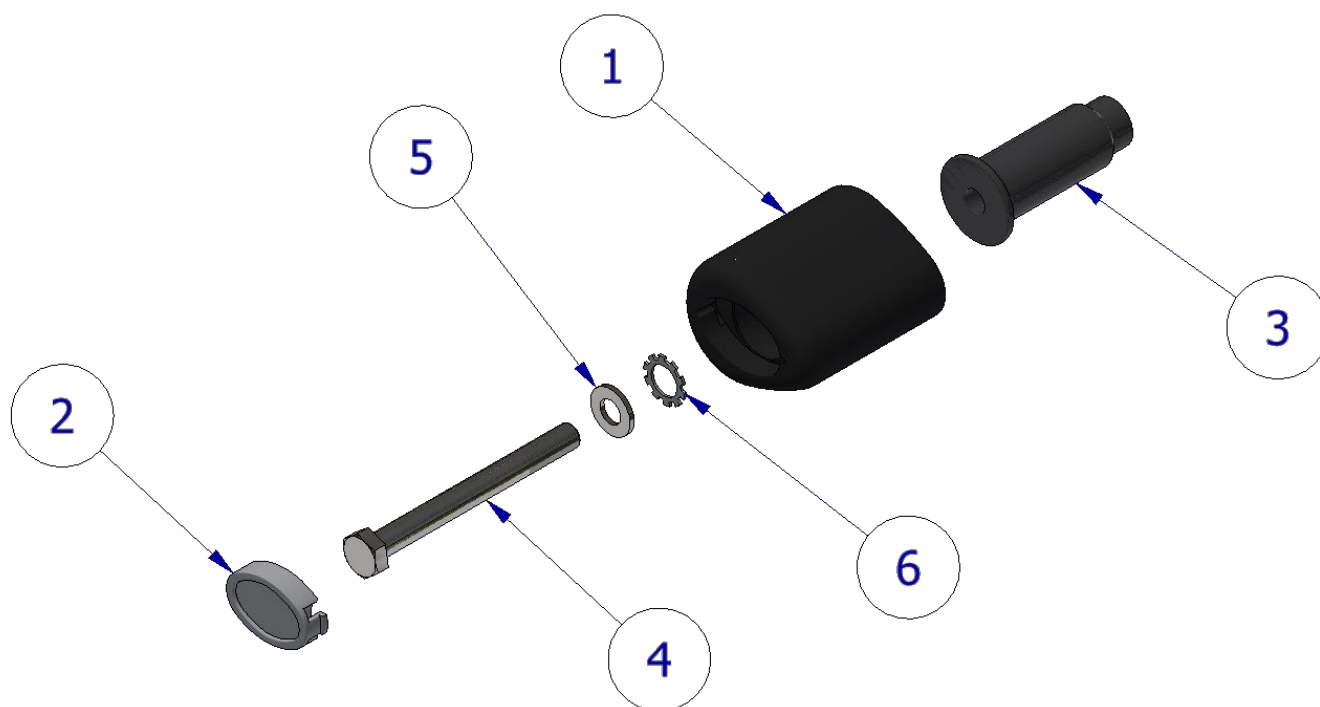
<u>TOOLS REQUIRED</u>	<u>VALEURS DE SERRAGE</u>
<ul style="list-style-type: none"> Clé Torx T45 et clé à cliquet + douille de 17mm Clé dynamométrique (jusqu'à 40Nm). 	M4 BOULON = 8Nm M5 BOULON = 12Nm M6 BOULON = 15Nm M8 BOULON = 20Nm M10 BOULON = 40Nm M12 BOULON = 40Nm

LÉGENDE

ARTICLE NO.	DESCRIPTION	QTÉ
ARTICLE 1	PROTECTION CRASH (BO061)	2
ARTICLE 2	CAPUCHON (BC0002)	2
ARTICLE 3	ENTRETOISE (S1449)	2
ARTICLE 4	M10 x 140mm BOULON	2
ARTICLE 5	M10 RONDELLE	2
ARTICLE 6	RONDELLE DE BLOCAGE	2

VUE D'ENSEMBLE CÔTÉ GAUCHE ET CÔTÉ DROIT

GAUCHE



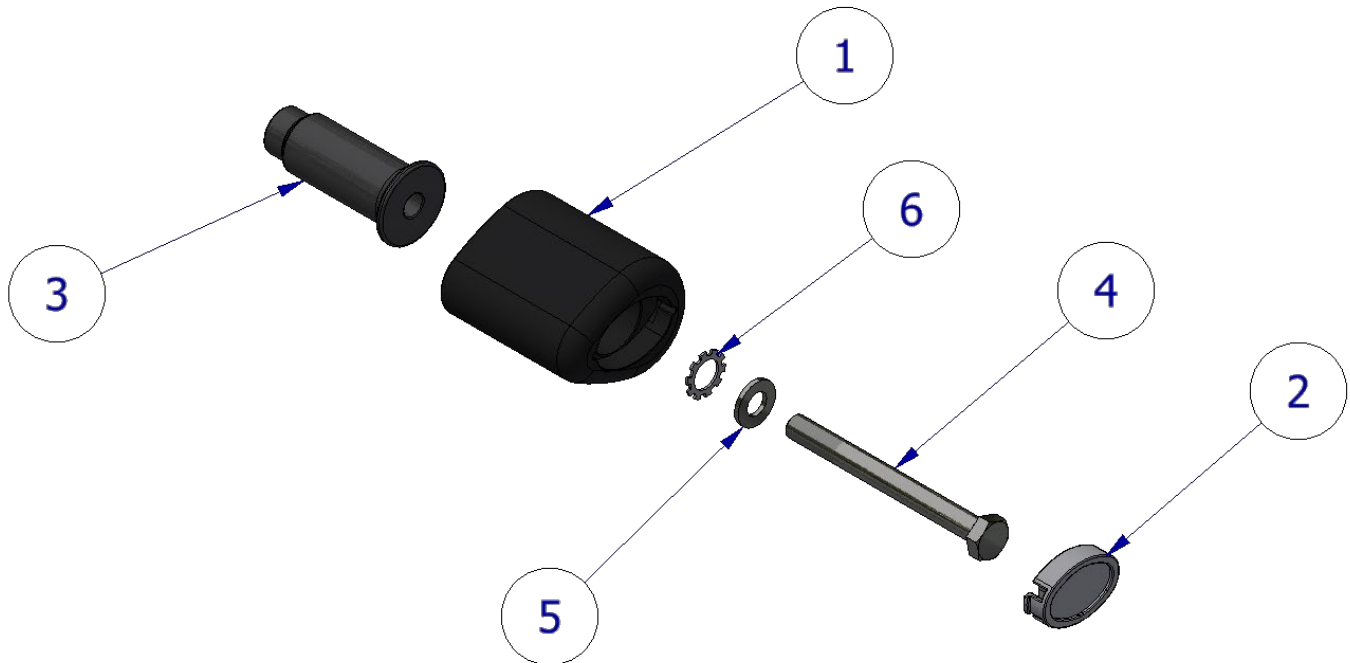
R&G Racing

Unit 1, Shelley's Lane, East Worldham, Alton, Hampshire, GU34 3AQ

Tel: +44 (0)1420 89007 Fax: +44 (0)1420 87301 www.rg-racing.com Email: info@rg-racing.com



CÔTÉ DROIT



NOTICE DE MONTAGE

Avant de retirer les boulons du moteur, assurez-vous que la moto soit droite et soutenue par un support moteur ou un cric approprié placé sous le carter de la moto pour supporter une partie du poids du moteur, cela évitera que le moteur bouge pendant le montage. NE PAS RETIRER PLUS D'UN BOULON DE MOTEUR À LA FOIS.

- Retirez le boulon dans la position fléchée sur la photo « A » à la page 1.
- Placez l'une des rondelles plates (article 5) sur l'un des boulons à tête hexagonale (article 4) comme indiqué du côté gauche de l'assemblage.
- Placez l'une des rondelles de blocage (Article 6) sur le boulon et contre la rondelle qui vient d'être montée comme indiqué sur l'assemblage côté gauche.
- Placez le boulon avec les deux rondelles à travers l'une des protections crash (Article 1) comme indiqué sur l'assemblage côté gauche.
- Placez l'une des entretoises (article 3) sur l'extrémité exposée du boulon et contre la protection crash comme indiqué sur l'assemblage côté gauche.
- Mettez cet ensemble en place comme indiqué sur la photo « A » à la page 1. Enfin, serrez les boulons de protection crash jusqu'à ce que vous sentiez une certaine compression à l'intérieur de la protection à l'aide d'une douille et d'une clé de 17mm. VEUILLEZ NOTER QUE LA PROTECTION DOIT ÊTRE POSITIONNÉE COMME INDIQUÉ SUR LES SCHÉMAS D'ASSEMBLAGE AVEC L'EXTRÉMITÉ LA PLUS GRANDE VERS L'AVANT DE LA MOTO. Tournez un peu plus pour sentir la compression augmenter légèrement. Appliquez ensuite un quart de tour. Serrez à 40 Nm de couple (ne dépassez pas cette valeur, car cela pourrait endommager la moto et le boulon).
- S'il n'est pas déjà installé, placez le sticker dans l'évidement du capuchon de protection crash (article 2).
- Placez le capuchon de protection crash (article 1) dans la protection crash.
- RÉPÉTER LES ÉTAPES CI-DESSUS POUR LE CÔTÉ DROIT.

R&G Racing

Unit 1, Shelley's Lane, East Worldham, Alton, Hampshire, GU34 3AQ

Tel: +44 (0)1420 89007 Fax: +44 (0)1420 87301 www.rg-racing.com Email: info@rg-racing.com



Voir plus de produits R&G pour votre moto via ce lien :

[R&G Racing | All Products for GasGas - SM700 \(2022\) \(rg-racing.com\)](http://www.rg-racing.com)

ISSUE 1 - 12/01/2023 (MH)

CONSUMER NOTICE

The catalogue description and any exhibition of samples are only broad indications of the Products and R&G may make design changes which do not diminish their performance or visual appeal and supplying them in such state shall conform to the order. The Buyer acknowledges no representation or warranty (other than as to title) has been given or will apply to the Products other than those in R&G's order or confirmation and the Buyer confirms it has chosen the Products as being of merchantable quality and suitable for its particular purposes. Where R&G fits the Products or undertakes other services it shall exercise reasonable skill and care and rectify any fault free of charge unless the workmanship has been disturbed. The Buyer is responsible for ensuring that the warranty on the motorcycle is not affected by the fitting of the Products. On return of any defective Products R&G shall at its option either supply a replacement or refund the purchase money but shall not be liable if the Products have been modified or used or maintained otherwise than in accordance with R&G's or manufacturer's instructions and good engineering practice or if the defect arises from accident or neglect. Other than identified above and subject to R&G not limiting its liability for causing death and personal injury, it shall not be liable for indirect or consequential loss and otherwise its liability shall be limited to the amounts paid by the Buyer for the Products or the fitting or service concerned. These terms do not affect the Buyer's statutory rights.

R&G RACING RETURNS POLICY (NON-FAULTY GOODS)

Returns must be pre-authorized (if not pre-authorized the return will be rejected). Goods may only be returned direct to us if they were purchased direct from us (customer must prove if necessary). Otherwise to be returned to original vendor. Goods must be in re-sellable condition, in the opinion of R&G Racing. All returns are subject to a 25% restocking and handling fee (25% of the gross value exc. P&P – at the prevailing price at time of purchase). The customer must pay any and all carriage charges. No returns of discontinued products, unless within 14 days of purchase. This policy does not affect your statutory rights and does not refer to faulty goods.

R&G Racing

Unit 1, Shelley's Lane, East Worldham, Alton, Hampshire, GU34 3AQ

Tel: +44 (0)1420 89007 Fax: +44 (0)1420 87301 www.rg-racing.com Email: info@rg-racing.com



MONTAGEANLEITUNG CP0549 RACING STURZPADS



ABBILDUNG A

ALLE KIT-TEILE SIND AUF DEN NACHFOLGENDEN SEITEN ABGEBILDET UND GEKENNZEICHNET.

DIE ABGEBILDETEN TEILE DIENEN LEDIGLICH ZUR ERKLÄRUNG.

ÜBERPRÜFEN SIE ZUERST, DASS ALLE TEILE VORHANDEN SIND.

LESEN SIE DIE MONTAGEANLEITUNG KOMPLETT DURCH, BEVOR SIE ANFANGEN.

WENN SIE BEI DER MONTAGE DIESES PRODUKTES UNSICHER SIND, BITTE EINEN UNSERER HÄNDLER KONTAKTIEREN ODER DAS KIT VON EINEM QUALIFIZIERTEN ZWEIRAD-MECHANIKER MONTIEREN LASSEN.

DIE VERPACKUNG DER TEILE STELLT NICHT DIE REIHENFOLGE DER MONTAGE DAR.

HINWEIS FÜR KITS MIT PLASTIKUNTERLEGSCHLEIBEN AN DEN SCHRAUBEN –
DIESE PLASTIK-UNTERLEGSCHLEIBEN WERDEN NICHT FÜR DEN EINBAU BENÖTIGT.

EINE DIGITALE VERSION DIESER MONTAGEANLEITUNG KANN AUF FOLGENDER SEITE HERUNTERGELADEN WERDEN:

WWW.RG-RACING.COM

R&G Racing

Unit 1, Shelley's Lane, East Worldham, Alton, Hampshire, GU34 3AQ

Tel: +44 (0)1420 89007 Fax: +44 (0)1420 87301 www.rg-racing.com Email: info@rg-racing.com



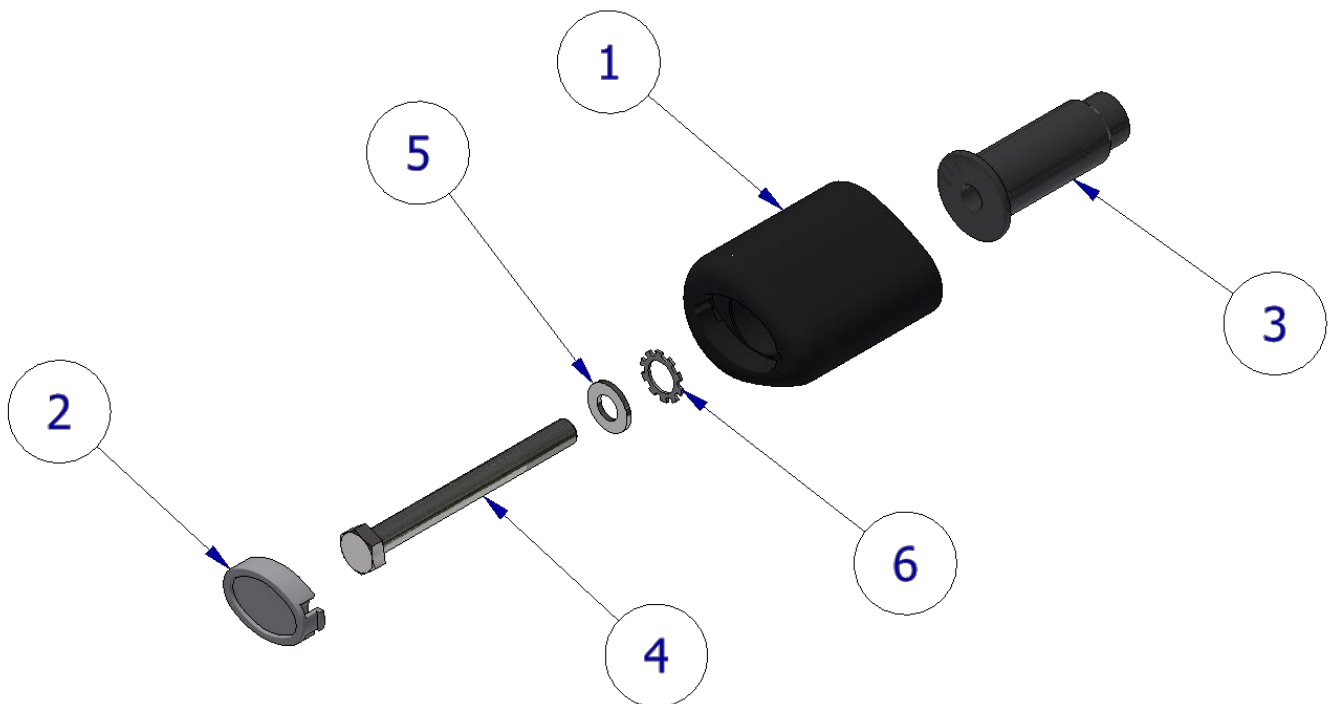
SIE BENÖTIGEN FOLGENDES WERKZEUG:	ALLGEM. ANZUGSDREHMOMENTE
<ul style="list-style-type: none"> Satz Steckschlüssel inkl. T45 Torx-Schlüssel und 17mm A/F Steckschlüssel Drehmomentschlüssel (bis 40Nm) 	<p>M4 SCHRAUBE = 8Nm</p> <p>M5 SCHRAUBE = 12Nm</p> <p>M6 SCHRAUBE = 15Nm</p> <p>M8 SCHRAUBE = 20Nm</p> <p>M10 SCHRAUBE = 40Nm</p> <p>M12 SCHRAUBE = 40Nm</p>

LIEFERUMFANG

ARTIKEL NR.	BESCHREIBUNG	MENGE
ARTIKEL 1	STURZPAD (BOO61)	2
ARTIKEL 2	STURZPAD-KAPPE (BC0002)	2
ARTIKEL 3	DISTANZHALTER (S1449)	2
ARTIKEL 4	M10 x 140mm SCHRAUBE	2
ARTIKEL 5	M10 UNTERLEGSCHIEBE	2
ARTIKEL 6	ZAHNSCHIEBE	2

LINKE & RECHTE SEITE – EXPLOSIONSZEICHNUNG ZUSAMMENBAU

LINKE SEITE



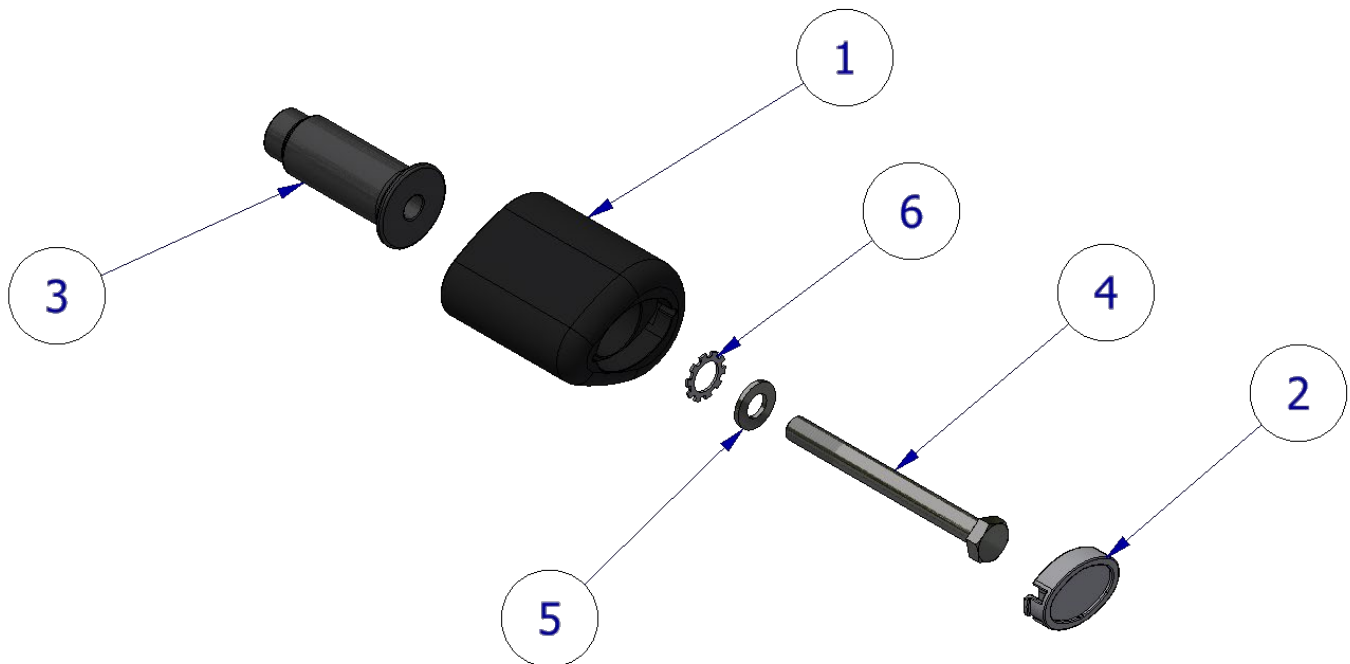
R&G Racing

Unit 1, Shelley's Lane, East Worldham, Alton, Hampshire, GU34 3AQ

Tel: +44 (0)1420 89007 Fax: +44 (0)1420 87301 www.rg-racing.com Email: info@rg-racing.com



RECHTE SEITE



MONTAGEANLEITUNG

Bevor Sie die Schrauben für den Motor entfernen, stellen Sie sicher, dass das Motorrad aufrecht steht und der Motor mit einem geeigneten Ständer/Heber unterhalb der Ölwanne gestützt wird. Dies verhindert, dass der Motor sich bei der Entfernung von Motorschrauben bewegt. **WÄHREND DER INSTALLATION DÜRFEN DIE SCHRAUBEN FÜR DEN MOTOR NUR EINZELN UND NIE GLEICHZEITIG ENTFERMT WERDEN.**

- Entfernen Sie die Schrauben, die in Abbildung 'A' auf Seite 1 gekennzeichnet ist.
- Eine Unterlegscheibe (**Artikel 5**) an einer Sechskantschraube (**Artikel 4**) anbringen wie in der Zeichnung für die linke Seite abgebildet.
- Eine Zahnscheibe (**Artikel 6**) an der Schraube anbringen und zur soeben montieren Unterlegscheibe hochschieben.
- Als nächstes die Schraube mit den Unterlegscheiben in ein Sturzpad (**Artikel 1**) einsetzen wie in der Zeichnung für die linke Seite abgebildet.
- Einen Distanzhalter (**Artikel 3**) am hervorstehenden Ende der Schraube anbringen wie in der Zeichnung Zusammenbau für die linke Seite abgebildet.
- Die Sturzpad-Einheit in Position bringen wie in **Abbildung A** auf Seite 1 abgebildet. Die Schraube mit einem 17mm Steckschlüssel festziehen, bis Sie etwas Druck vom Inneren des Sturzpads spüren. **BITTE DARAUFG ACHTEN, DASS DAS STURZPAD POSITIONIERT IST WIE IN DER ZEICHNUNG ZUSAMMENBAU – DAS GRÖßERE ENDE DES STURZPADS ZUM VORDERTEIL DES MOTORRADS GERICHTET.** Noch etwas drehen, bis Sie merken, dass der Druck sich leicht erhöht, dann noch eine Vierteldrehung anwenden. **Mit 40 Nm Anzugsmoment anziehen (40 Nm nicht überschreiten – dies kann zu einer Beschädigung des Motorrades und der Schraube führen).**
- Wenn noch nicht bereits montiert, montieren Sie einen Bubble-Aufkleber in der Vertiefung der Sturzpad-Schutzkappe (**Artikel 2**).
- Montieren Sie eine Sturzpad-Kappe (**Artikel 2**) am Sturzpad.
- WIEDERHOLEN SIE DIE OBEN BESCHRIEBENEN SCHRITTE AN DER RECHTEN SEITE.

R&G Racing

Unit 1, Shelley's Lane, East Worldham, Alton, Hampshire, GU34 3AQ

Tel: +44 (0)1420 89007 Fax: +44 (0)1420 87301 www.rg-racing.com Email: info@rg-racing.com



Klicken Sie hier, um weitere R&G Produkte für Ihr Motorrad zu finden:

[R&G Racing | Alle Produkte für GasGas - SM700 \(2022\) \(rg-racing.com\)](https://www.rg-racing.com)

AUSGABE 1 - 12/01/2023 (MH)

CONSUMER NOTICE

The catalogue description and any exhibition of samples are only broad indications of the Products and R&G may make design changes which do not diminish their performance or visual appeal and supplying them in such state shall conform to the order. The Buyer acknowledges no representation or warranty (other than as to title) has been given or will apply to the Products other than those in R&G's order or confirmation and the Buyer confirms it has chosen the Products as being of merchantable quality and suitable for its particular purposes. Where R&G fits the Products or undertakes other services it shall exercise reasonable skill and care and rectify any fault free of charge unless the workmanship has been disturbed. The Buyer is responsible for ensuring that the warranty on the motorcycle is not affected by the fitting of the Products. On return of any defective Products R&G shall at its option either supply a replacement or refund the purchase money but shall not be liable if the Products have been modified or used or maintained otherwise than in accordance with R&G's or manufacturer's instructions and good engineering practice or if the defect arises from accident or neglect. Other than identified above and subject to R&G not limiting its liability for causing death and personal injury, it shall not be liable for indirect or consequential loss and otherwise its liability shall be limited to the amounts paid by the Buyer for the Products or the fitting or service concerned. These terms do not affect the Buyer's statutory rights.

R&G RACING RETURNS POLICY (NON-FAULTY GOODS)

Returns must be pre-authorized (if not pre-authorized the return will be rejected). Goods may only be returned direct to us if they were purchased direct from us (customer must prove if necessary). Otherwise to be returned to original vendor. Goods must be in re-sellable condition, in the opinion of R&G Racing. All returns are subject to a 25% restocking and handling fee (25% of the gross value exc. P&P – at the prevailing price at time of purchase). The customer must pay any and all carriage charges. No returns of discontinued products, unless within 14 days of purchase. This policy does not affect your statutory rights and does not refer to faulty goods.

R&G Racing

Unit 1, Shelley's Lane, East Worldham, Alton, Hampshire, GU34 3AQ

Tel: +44 (0)1420 89007 Fax: +44 (0)1420 87301 www.rg-racing.com Email: info@rg-racing.com