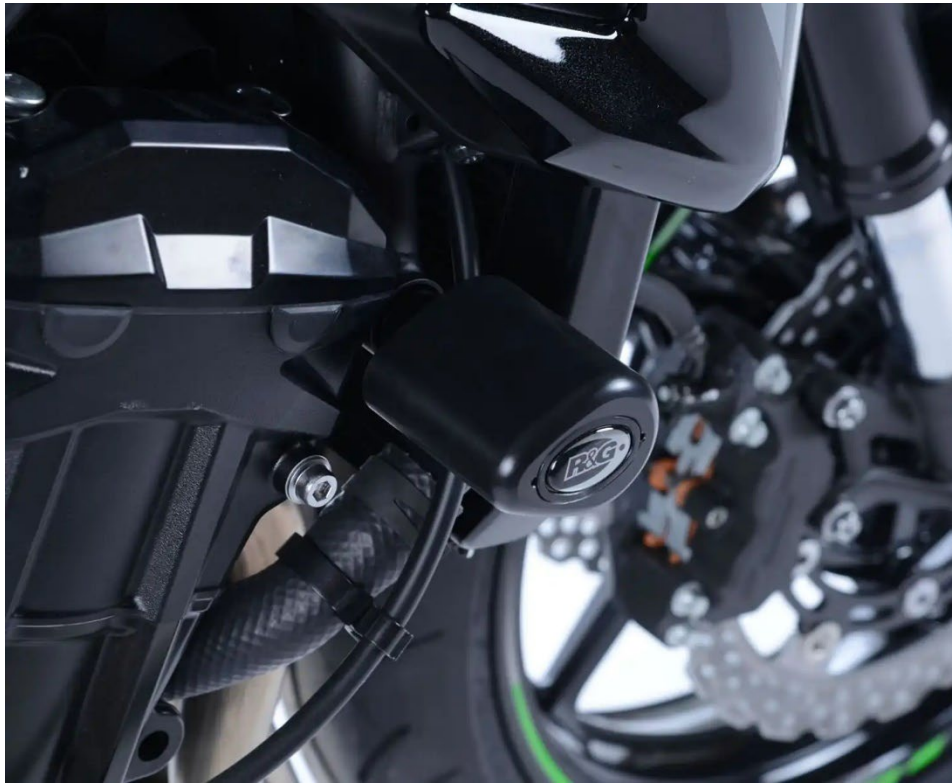




## **FITTING INSTRUCTIONS CP0418 AERO CRASH PROTECTORS**



**THIS KIT CONTAINS THE ITEMS PICTURED AND LABELLED OVER PAGE.**

SOME PARTS MAY BE SHOWN FOR CLARITY OF INSTRUCTIONS ONLY.

DO NOT PROCEED UNTIL YOU ARE SURE ALL PARTS ARE PRESENT.

**PLEASE READ ALL INSTRUCTIONS BEFORE PROCEEDING.**

**IF IN ANY DOUBT WHEN FITTING OUR PRODUCTS, CONSULT ONE OF OUR DEALERS  
OR HAVE FITTED BY A QUALIFIED TECHNICIAN.**

PLEASE NOTE THAT THE WAY THE KIT IS PACKED DOES NOT NECESSARILY REPRESENT THE WAY OF  
MOUNTING TO THE BIKE.

IN THE EVENT OF RUBBER WASHERS BEING USED TO HOLD COMPONENTS ONTO BOLTS,  
THESE RUBBER WASHERS CAN BE THROWN AWAY.

**DIGITAL COPIES OF THESE INSTRUCTIONS ARE AVAILABLE FROM:**

[WWW.RG-RACING.COM](http://WWW.RG-RACING.COM)



<b><u>TOOLS REQUIRED</u></b>	<b><u>GENERAL TORQUE SETTINGS</u></b>
<ul style="list-style-type: none"> <li>• 17mm &amp; 14mm A/F SOCKET &amp; WRENCH</li> <li>• TORQUE WRENCH (UP TO 50Nm)</li> <li>• SUITABLE SUPPORT JACK</li> </ul>	<p>M4 BOLT = 8Nm</p> <p>M5 BOLT = 12Nm</p> <p>M6 BOLT = 15Nm</p> <p>M8 BOLT = 20Nm</p> <p>M10 BOLT = 40Nm</p> <p>M12 BOLT = 40Nm</p>

**LEGEND**

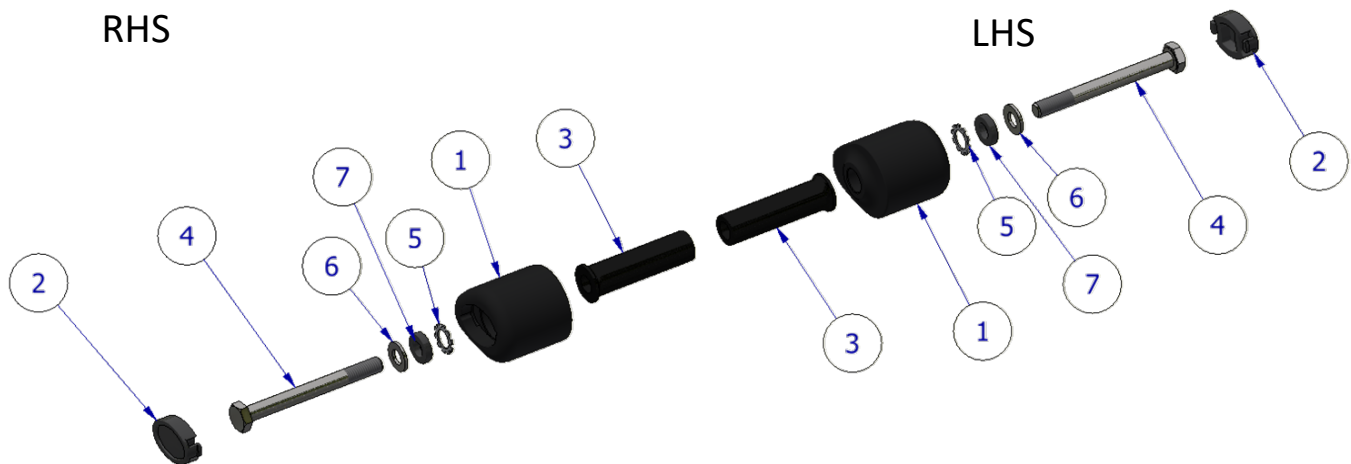
<b>ITEM NO.</b>	<b>DESCRIPTION</b>	<b>QTY</b>
ITEM 1	BOBBINS	2
ITEM 2	SPACER 57.5mm LONG	2
ITEM 3	BOBBIN CAPS	2
ITEM 4	140mm HEX HEAD BOLT	2
ITEM 5	LOCKING WASHERS	2
ITEM 6	M10 WASHERS	2
ITEM 7	SPACER 5mm LONG	2

**AERO-STYLE CRASH PROTECTOR ORIENTATION**





## LHS & RHS EXPLODED ASSEMBLY VIEW



## FITTING PICTURES



**Picture 1**



**Picture 2**

## FITTING INSTRUCTIONS

**Before removing engine bolts, ensure the bike is upright and supported by a suitable engine stand or jack placed under the sump of the motorbike to support the partial weight of the engine, this will prevent the engine from moving during fitting. DO NOT REMOVE MORE THAN 1 ENGINE BOLT AT ANY TIME.**

### PREPARATION:

- Place a suitable jack beneath the engine in a central position using a piece of wood between the jack and engine.
- Apply very light pressure to the underside of the engine to support the engine during the fitment process.
- **Assemble the crash protectors before removing the engine bolts to limit the amount of time the engine is partially un-supported.**
- Following the assembly diagram place one of the M10 washers (**ITEM 6**) over the bolts (**ITEM 4**) followed by the 5mm spacer (**ITEM 7**) and shake proof washers (**ITEM 5**).
- Insert the bolts (**ITEM 2**) with washers into the bobbins (**ITEM 1**) followed by the 57.5mm long spacers (**ITEM 3**).

R&G Racing

Unit 1, Shelley's Lane, East Worldham, Alton, Hampshire, GU34 3AQ

Tel: +44 (0)1420 89007 Fax: +44 (0)1420 87301 [www.rg-racing.com](http://www.rg-racing.com) Email: [info@rg-racing.com](mailto:info@rg-racing.com)

**INSTALLATION:**

- Remove the LHS engine bolt (**Picture 1**).
- Push the LHS bolt/assembly you prepared earlier into the engine mount hole and thread by hand to avoid cross threading.  
**NOTE: To avoid cross threading apply forward pressure to the bolt and rotate counter-clockwise until a click is heard then begin to turn clockwise & tighten.**
- Rotate the bobbin a few degrees counter-clockwise and hold in place while tightening to stop the bobbin rotating too far while tightening.
- Using a torque wrench to tighten the bolt to 40 Nm.
- Repeat the process for the other side referring to **Picture 2**.
- Once completed, double check torque settings & the position/orientation of the bobbins then push the bobbin caps (**ITEM 2**) into place and remove the jack.

**Please note:** *Torque of the engine/bobbin bolts should be checked at regular intervals when doing routine maintenance/servicing.*

ISSUE 2 - 02/09/2024 (MH)

**CONSUMER NOTICE**

The catalogue description and any exhibition of samples are only broad indications of the Products and R&G may make design changes which do not diminish their performance or visual appeal and supplying them in such state shall conform to the order. The Buyer acknowledges no representation or warranty (other than as to title) has been given or will apply to the Products other than those in R&G's order or confirmation and the Buyer confirms it has chosen the Products as being of merchantable quality and suitable for its particular purposes. Where R&G fits the Products or undertakes other services it shall exercise reasonable skill and care and rectify any fault free of charge unless the workmanship has been disturbed. The Buyer is responsible for ensuring that the warranty on the motorcycle is not affected by the fitting of the Products. On return of any defective Products R&G shall at its option either supply a replacement or refund the purchase money but shall not be liable if the Products have been modified or used or maintained otherwise than in accordance with R&G's or manufacturer's instructions and good engineering practice or if the defect arises from accident or neglect. Other than identified above and subject to R&G not limiting its liability for causing death and personal injury, it shall not be liable for indirect or consequential loss and otherwise its liability shall be limited to the amounts paid by the Buyer for the Products or the fitting or service concerned. These terms do not affect the Buyer's statutory rights.

**R&G RACING RETURNS POLICY (NON-FAULTY GOODS)**

Returns must be pre-authorized (if not pre-authorized the return will be rejected). Goods may only be returned direct to us if they were purchased direct from us (customer must prove if necessary). Otherwise to be returned to original vendor. Goods must be in re-sellable condition, in the opinion of R&G Racing. All returns are subject to a 25% restocking and handling fee (25% of the gross value exc. P&P – at the prevailing price at time of purchase). The customer must pay any and all carriage charges. No returns of discontinued products, unless within 14 days of purchase. This policy does not affect your statutory rights and does not refer to faulty goods.

R&G Racing

Unit 1, Shelley's Lane, East Worldham, Alton, Hampshire, GU34 3AQ

Tel: +44 (0)1420 89007 Fax: +44 (0)1420 87301 [www.rg-racing.com](http://www.rg-racing.com) Email: [info@rg-racing.com](mailto:info@rg-racing.com)



## **NOTICE DE MONTAGE CP0418 PROTECTIONS CRASH**



**CE KIT CONTIENT LES ARTICLES ILLUSTRÉS ET ÉTIQUETÉS SUR LA PAGE.**

CERTAINES PARTIES PEUVENT ÊTRE PRÉSENTES UNIQUEMENT POUR LA CLARTÉ DES INSTRUCTIONS.

NE PAS PROCÉDER AU MONTAGE TANT QUE VOUS N'ÊTES PAS SÛR QUE TOUTES LES PIÈCES SOIENT PRÉSENTES.

**VEUILLEZ LIRE TOUTES LES INSTRUCTIONS AVANT DE CONTINUER.**

**EN CAS DE DOUTE LORS DU MONTAGE DE NOS PRODUITS, CONSULTEZ UN DE NOS REVENDEURS OU FAITES APPEL À UN TECHNICIEN QUALIFIÉ.**

VEUILLEZ NOTER QUE LA FAÇON DONT LE KIT EST EMBALLÉ NE REPRÉSENTE PAS NECESSAIREMENT LA MANIÈRE DE LE MONTER SUR LA MOTO.

SI DES RONDELLES EN CAOUTCHOUC SONT UTILISÉES POUR MAINTENIR LES COMPOSANTS SUR LES BOULONS, ELLES PEUVENT ÊTRE JETÉES.

**NOTICE DISPONIBLE AU TÉLÉCHARGEMENT SUR :**

[WWW.RG-RACING.COM](http://WWW.RG-RACING.COM)

R&G Racing

Unit 1, Shelley's Lane, East Worldham, Alton, Hampshire, GU34 3AQ

Tel: +44 (0)1420 89007 Fax: +44 (0)1420 87301 [www.rg-racing.com](http://www.rg-racing.com) Email: [info@rg-racing.com](mailto:info@rg-racing.com)





<b><u>OUTILS REQUIS</u></b>	<b><u>VALEURS DE SERRAGE</u></b>
<ul style="list-style-type: none"> <li>• CLÉ HEXAGONALE 14mm &amp; 17mm</li> <li>• CLÉ DYNAMOMÉTRIQUE (JUSQU'À 50Nm)</li> <li>• CRIC ADAPTÉ</li> </ul>	M4 BOULON = 8Nm M5 BOULON = 12Nm M6 BOULON = 15Nm M8 BOULON = 20Nm M10 BOULON = 40Nm M12 BOULON = 40Nm

### **LÉGENDE**

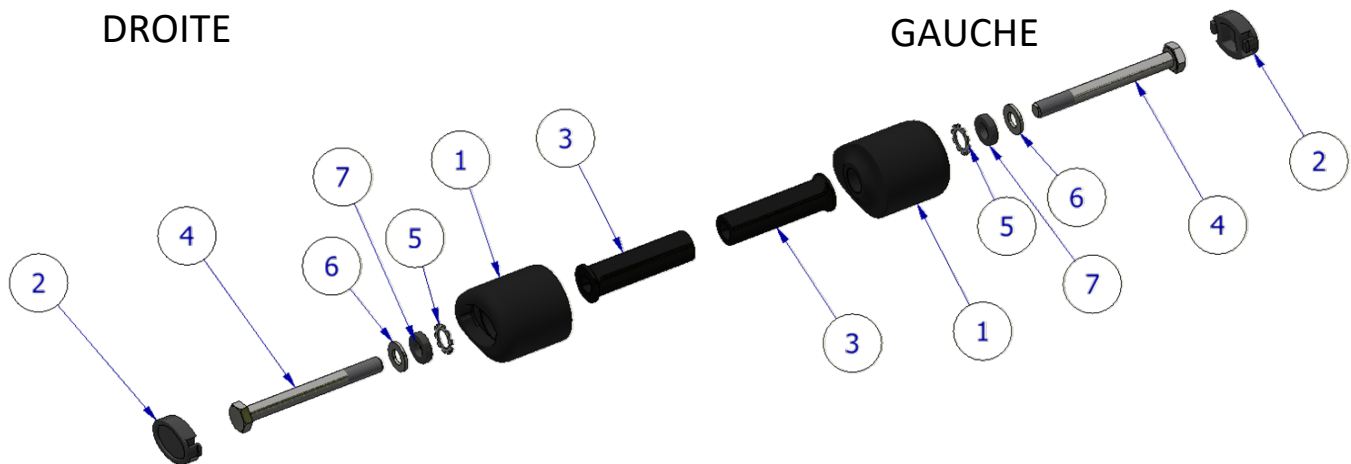
<b>ARTICLE NO.</b>	<b>DESCRIPTION</b>	<b>QTÉ</b>
ARTICLE 1	PROTECTIONS CRASH	2
ARTICLE 2	ENTRETOISE 57.5mm DE LOG	2
ARTICLE 3	CAPUCHONS DE PROTECTION	2
ARTICLE 4	140mm BOULON	2
ARTICLE 5	RONDELLES DE BLOCAGE	2
ARTICLE 6	M10 RONDELLES	2
ARTICLE 7	ENTRETOISE 5mm DE LONG	2

### **ORIENTATION DE LA PROTECTION CRASH**





## VUE D'ENSEMBLE CÔTÉ GAUCHE ET DROIT



## PHOTOS DE MONTAGE



**Photo 1**



**Photo 2**

## NOTICE DE MONTAGE

**Avant de retirer les boulons du moteur, assurez-vous que la moto soit en position verticale et soutenue par un support moteur ou un cric approprié placé sous le carter de la moto pour supporter le poids partiel du moteur, cela empêchera le moteur de bouger pendant le montage. NE RETIREZ PAS PLUS D'UN BOULON DU MOTEUR À LA FOIS.**

### PRÉPARATION :

- Placez un cric adapté sous le moteur en position centrale en utilisant un morceau de bois entre le cric et le moteur.
- Appliquez une très légère pression sur le dessous du moteur pour soutenir le moteur pendant le processus de montage.  
**Assemblez les protections crash avant de retirer les boulons du moteur pour limiter la durée pendant laquelle le moteur est partiellement sans support.**
- En suivant le schéma de montage, placez l'une des rondelles M10 (ARTICLE 6) sur les boulons (ARTICLE 4), suivie de l'entretoise de 5 mm (ARTICLE 7) et des rondelles anti-vibrations (ARTICLE 5).

R&G Racing

Unit 1, Shelley's Lane, East Worldham, Alton, Hampshire, GU34 3AQ

Tel: +44 (0)1420 89007 Fax: +44 (0)1420 87301 [www.rg-racing.com](http://www.rg-racing.com) Email: [info@rg-racing.com](mailto:info@rg-racing.com)



- Insérez les boulons (ARTICLE 2) avec les rondelles dans les protections (ARTICLE 1), suivis des entretoises de 57,5 mm de long (ARTICLE 3).

### **INSTALLATION:**

- Retirez le boulon moteur côté gauche (photo 1).
- Poussez le boulon/l'assemblage côté gauche que vous avez préparé précédemment dans le trou de montage du moteur et vissez à la main pour éviter de croiser le filetage.
- **REMARQUE : pour éviter de croiser le filetage, appliquez une pression vers l'avant sur le boulon et faites-le tourner dans le sens inverse des aiguilles d'une montre jusqu'à ce qu'un clic se fasse entendre, puis commencez à tourner dans le sens des aiguilles d'une montre et serrez.**
- Faites tourner la protection de quelques degrés dans le sens inverse des aiguilles d'une montre et maintenez-la en place pendant le serrage pour empêcher la protection de tourner trop loin pendant le serrage.
- Utilisez une clé dynamométrique pour serrer le boulon à 40 Nm.
- Répétez le processus de l'autre côté en vous référant à la photo 2.
- Une fois terminé, vérifiez à nouveau les réglages de couple et la position/orientation des protections puis poussez les capuchons de protection (ARTICLE 2) en place et retirez le cric.

**Note :** *Le couple de serrage des boulons du moteur/de la protection doit être vérifié à intervalles réguliers lors de l'entretien/réparation de routine.*

ISSUE 2 - 02/09/2024 (MH)

### **CONSUMER NOTICE**

The catalogue description and any exhibition of samples are only broad indications of the Products and R&G may make design changes which do not diminish their performance or visual appeal and supplying them in such state shall conform to the order. The Buyer acknowledges no representation or warranty (other than as to title) has been given or will apply to the Products other than those in R&G's order or confirmation and the Buyer confirms it has chosen the Products as being of merchantable quality and suitable for its particular purposes. Where R&G fits the Products or undertakes other services it shall exercise reasonable skill and care and rectify any fault free of charge unless the workmanship has been disturbed. The Buyer is responsible for ensuring that the warranty on the motorcycle is not affected by the fitting of the Products. On return of any defective Products R&G shall at its option either supply a replacement or refund the purchase money but shall not be liable if the Products have been modified or used or maintained otherwise than in accordance with R&G's or manufacturer's instructions and good engineering practice or if the defect arises from accident or neglect. Other than identified above and subject to R&G not limiting its liability for causing death and personal injury, it shall not be liable for indirect or consequential loss and otherwise its liability shall be limited to the amounts paid by the Buyer for the Products or the fitting or service concerned. These terms do not affect the Buyer's statutory rights.

### **R&G RACING RETURNS POLICY (NON-FAULTY GOODS)**

Returns must be pre-authorized (if not pre-authorized the return will be rejected). Goods may only be returned direct to us if they were purchased direct from us (customer must prove if necessary). Otherwise to be returned to original vendor. Goods must be in re-sellable condition, in the opinion of R&G Racing. All returns are subject to a 25% restocking and handling fee (25% of the gross value exc. P&P – at the prevailing price at time of purchase). The customer must pay any and all carriage charges. No returns of discontinued products, unless within 14 days of purchase. This policy does not affect your statutory rights and does not refer to faulty goods.

R&G Racing

Unit 1, Shelley's Lane, East Worldham, Alton, Hampshire, GU34 3AQ

Tel: +44 (0)1420 89007 Fax: +44 (0)1420 87301 [www.rg-racing.com](http://www.rg-racing.com) Email: [info@rg-racing.com](mailto:info@rg-racing.com)